



Dean of the Watts College of Public Service and Community Solutions

The Opportunity

Arizona State University invites applications and nominations for the next Dean of the Watts College of Public Service and Community Solutions (Watts College).

Arizona State University seeks a visionary, dynamic, and collaborative leader to serve as the Dean of the Watts College, with responsibility for four schools: School of Community Resources and Development, School of Criminology and Criminal Justice, School of Public Affairs, and School of Social Work; more than 30 research units, and numerous undergraduate and graduate degree programs. Current student enrollment in the Watts College is over 7,000 students and annual research expenditures are in excess of \$34M for FY25.

The next Dean of Watts College will provide academic and administrative leadership for the College by facilitating enrollment growth and the success of in person and online student populations at the undergraduate and graduate levels aligned with the ASU Charter; catalyzing interdisciplinary research initiatives and partnerships; and engaging federal, state, community partners, alumni, and donors to grow resources in support of students and faculty. The Dean of the Watts College reports to the Executive Vice President and University Provost and is a member of the Provost's Deans Council. The successful candidate will be an academic innovator with the ability to engage faculty, students, staff, and the wider community in envisioning 21st century models of education, research and engagement.

Arizona State University is one of the nation's preeminent public research universities, a member of the American Association of Universities (AAU), and a recognized innovator in higher education committed to excellence, access and impact.



Leadership Opportunities

Vision and Strategy

The Dean will work with the Watts College community to evolve and implement the vision and strategic direction for the college that cultivates academic and research growth, program innovation and vitality, and student success aligned with Watts College and ASU priorities. The Dean will learn and articulate the opportunities, challenges and priorities of each of the schools to ensure that a vision for the College and strategic plan reflects the uniqueness of each of the academic disciplines while also fostering a comprehensive pathway forward.

Academic Excellence and Innovation

The Dean will foster a culture of academic excellence and innovation that prepares students for meaningful careers and leadership in today's dynamic workforce and the future of public service. The Dean will advance academic innovation by championing interdisciplinary curricula, experiential learning, and emerging technologies that prepare students for the evolving demands and needs of the future public service workforce in Arizona and beyond.

Success for All Students

The Dean will embrace a model of student success that encompasses a holistic commitment to supporting all students through responsive faculty engagement, inclusive learning environments, experiential opportunities, and student-centered academic support and advising. This model will prioritize strategies that promote student belonging, academic momentum, and timely progress toward degree completion, with a clear focus on strengthening retention, persistence, and graduation rates across all student populations.

Faculty and Staff

The Dean will lead strategic efforts to recruit, retain, and support a workforce of talented faculty and staff in the Watts College and foster a collegial climate that supports belonging, engagement, and professional fulfillment. The Dean will champion a comprehensive approach to faculty development that supports faculty at all career stages, and they will value staff as essential partners in the academic mission. The Dean will actively promote a culture of respect, empowerment, and shared governance.

Robust Enrollment

Sustaining and growing enrollment in the Watts College will be a key goal for the new Dean to meet student demand and foster ASU's commitment to access. The Dean will work to assure and sustain robust enrollment in the College's in person/immersion programs, facilitate continued growth of online degrees and programs, and ensure a high level of educational content and delivery in all educational offerings. Importantly, robust enrollment will allow the College to fulfill its public mission of providing accessible, high-quality education to a broad population and generate the resources necessary to enable the College to continue to offer a wide range of programs, attract talented faculty, and invest in innovative research and community engagement initiatives.

Research

Research is a fundamental cornerstone of ASU's mission and charter. To that end, the Dean will support and promote research opportunities in the College that advance knowledge and discovery while driving innovation and societal impact. The Dean will support faculty in securing external funding for their research and in partnership with the faculty and research staff, they will advance research that addresses real-world challenges through interdisciplinary collaboration and engagement with local and global communities. To further extend the impact of ASU's research mission, the Dean will encourage Watts faculty and students to participate in research that informs teaching, enhances experiential learning, and supports ASU's commitment to inclusive excellence and public service.

Alignment with the ASU Charter

The Dean will advance ASU's Charter by fostering an academic environment in Watts College that aligns with the University's commitment to access, excellence, and societal impact as outlined in the Charter. The Dean will lead with empathy, collegiality, and transparency, creating an environment of openness and trust where everyone can thrive. The Dean will foster a culture that integrates and supports tenure/tenure track faculty, career track and research faculty, students, and staff across the breadth of Watts College to create a cohesive community and collective identity, ensure student success, and advance research and discovery that benefit the public good.

Community Engagement and Partnerships

The Dean will foster community engagement in order to build and nurture relationships with internal and external community stakeholders that maximize visibility and impact for initiatives in Watts College. The Dean will ensure that these partnerships create meaningful opportunities for students and faculty to participate in transformative projects that advance research initiatives and have a lasting societal impact, contributing to both student and community success.

Philanthropy

With support from the ASU Foundation, the Dean will seek to increase philanthropy for Watts College by articulating a compelling vision that aligns with the College's and University's strategic priorities while resonating with prospects and donors. The Dean will cultivate strong relationships with alumni, friends, corporations, and foundations to secure financial support for Watts College, highlighting the transformative impact of contributions on the College's continued excellence and innovation. The excitement surrounding ASU's comprehensive campaign presents a unique opportunity to amplify these efforts.

Arizona State University

Arizona State University, ranked No. 1 “Most Innovative School” in the nation by U.S. News & World Report for 11 years in succession, has forged the model for a New American University. Repeatedly ranked No. 1, ASU has topped more than 30 lists in the last three years: No. 1 in the U.S. for global impact (Times Higher Education) and No. 1 in the U.S. for sustainable practices (Association for the Advancement of Sustainability in Higher Education). ASU is a comprehensive public research institution, measured not by whom it excludes, but by whom it includes and how they succeed; advancing research and discovery of public value; and assuming fundamental responsibility for the economic, social, cultural and overall health of the communities it serves. ASU operates on the principles that learning is a personal and original journey for each student; that they thrive on experience and that the process of discovery cannot be bound by traditional academic disciplines. Through innovation and a commitment to accessibility, ASU has drawn pioneering researchers to its faculty even as it expands opportunities for qualified students, attracting some of the highest-quality students from all 50 states and more than 130 nations.

Reflecting ASU's deep commitment to the state of Arizona and its 22 federally recognized tribes; ASU is dedicated to supporting tribal nations and providing resources that create and enable meaningful futures for Indigenous students and communities.

Reporting over \$1.4 billion in research expenditures in FY24, ASU is among the fastest-growing top research institutions in the nation.



About the Watts College

Arizona State University's Watts College of Public Service and Community Solutions is a highly ranked, comprehensive college of public service. Our four schools and over 30 research centers, offices and labs are advancing relevant educational programs and evidence-based solutions to address some of the world's most challenging social issues.

Academic excellence and accessibility

The Watts College of Public Service and Community Solutions is home to one of the university's most inclusive learning environments — high percentages of students coming from historically underrepresented racial and ethnic groups, students who are the first in their family to go to college and those facing high-financial need. Among our students are nearly 300 veterans, and we serve international students coming from 59 countries. Last year, we awarded over 2,500 degrees. Many of our students win local and national awards, and study concurrently in ASU's Barrett, the Honors College. We are proud to work closely with community partners to meet emerging workforce needs, and our commitment to hands-on, service learning helps prepare the next generation of public servants. Our highly ranked programs are available in person or online — we offer degrees in Arizona at ASU's Downtown Phoenix campus, ASU's West Valley campus, in Tucson and Yuma, and at the Hainan-Arizona State University International College (HAIC) in Hainan, China.

Local impact, social embeddedness

ASU is an anchor institution, vital to the Phoenix metropolitan area. Regardless of where they study, the Watts College of Public Service's students are close to the partners we serve. Public service is a cornerstone of our academic programs, research endeavors and student experiences. We bring a spirit of experimentation and systems-level thinking to the shared challenge of creating and maintaining public goods.

Solutions-oriented research

Our research is use-inspired, integrating theoretical and applied approaches to find solutions to complex social issues. Our unique structure — expertise across a broad range of areas — complements our entrepreneurial approach. We are deeply embedded in the community, forging partnerships that take on projects with local, national and international impact.

Community for good

At Watts College, students, faculty and alumni come together to change the world for the better. We don't just study public service. We live it. From fortifying families and neighborhoods to shaping policy and leading organizations, our people make a difference every day. We learn from one another, lift one another up and share a common purpose: to create communities where everyone can thrive.

When we work together, our impact lasts. That's the power of a **#CommunityForGood**.

About our students



7,291+

Total enrollment

(fall 2025,
excluding Hainan-Arizona State
University International College)

On-campus: 2,484

Online: 4,807



1100+

HAIC student enrollment



First Generation

On-campus: 52%

Online: 72%



Pell-Eligible

On-campus: 54%

Online: 56%



**Underrepresented
Racial/Ethnic Groups**

On-campus: 62%

Online: 49%

About our schools

School of Community Resources and Development

ASU's School of Community Resources and Development prepares leaders to make communities better places to live, work, play and visit. Through a broad range of excellent academic programs, scholarship and service, the school emphasizes a multi-disciplinary approach to sustainable community development worldwide. Faculty merge theory and practice, engaging an expansive network of partners that provide rich, hands-on experiences for students and opportunities to act on our common goal of generating solutions that lead to more vibrant, resilient and inclusive societies.

School of Criminology and Criminal Justice

ASU's School of Criminology and Criminal Justice is nationally recognized for preparing students to navigate the challenges of criminal justice practice in the 21st century. Academic programs focus on interdisciplinary approaches to major social issues and evidence-based best practices for responding to crime through the lenses of the three interrelated structures (policing, courts and corrections) that shape the criminal justice system. The school's PhD program is ranked second in the nation by U.S. News & World Report, reflecting cutting-edge research and high quality academic programs that ultimately contribute to societal well-being and enhance public safety.

School of Public Affairs

ASU's School of Public Affairs is nationally acclaimed for preparing a new generation of leaders. Unique strengths in local government, information technology, science and technology policy, environmental policy, urban innovation, civic engagement and new forms of governance have led U.S. News & World Report to rank the school — and its specializations — consistently among the top public affairs programs in the nation. Ranked #11 overall among graduate public affairs programs, the school lives the ASU Charter by preparing students and professionals for ethical, inclusive and effective public service; conducting cutting-edge research of value; and engaging locally, nationally and internationally with the communities we serve.

School of Social Work

ASU's School of Social Work is one of the largest and most multi-faceted schools of social work in the country, preparing social work practitioners, researchers, and advocates to lead positive change in the Southwest, nationally, and globally. The school's MSW program is ranked among U.S. News & World Report's top 20, and its faculty are the 4th most productive researchers in public universities according to the National Science Foundation. Academic programs offered in Phoenix, Tucson, Yuma, Glendale, online, on Zoom, and in a location near an international border and many tribal communities, provide unique opportunities for students to collaborate and learn with agencies and partners in the Southwest.

About our faculty, staff and support

124

**Tenured/Tenure-Track
Faculty**

99

Career-Track Faculty

298

Staff

\$8.2M

Philanthropic Support

\$34.3M

Research Expenditures and Centers

Over 30 research centers, offices and labs cover a broad spectrum of civic policy and social innovation. Faculty, students and community partners work collaboratively on complex issues to find solutions that have impact locally and globally.

All figures represent the fiscal 2025 year.

A photograph of three students in a classroom or meeting room. On the left, a young man with short brown hair is looking towards the camera. In the center, a young woman with dark hair is looking slightly to the right. On the right, a young woman with long brown hair is looking down. They are all wearing professional or semi-professional attire. In the background, there are computer monitors and a whiteboard.

University initiatives led by Watts College

Bridging Success

In Arizona, young people with a background in foster care can go to college tuition free, but there's still the cost of room, meals, books and other expenses — not easy for a young person just starting out on their own. Bridging Success at ASU gives these students a head start by helping them apply for financial aid and scholarships, find a place to live and learn about academic and other resources on campus.

MCLEAPS

The Maricopa County Leadership and Education Advancing Public Service (MCLEAPS) is an award-winning program that offers undergraduate and graduate students paid internships across various Maricopa County departments. This partnership between Arizona State University and Maricopa County provides students with hands-on experience, introducing them to public service careers — in county government — offering specialized career training applicable to any field.

Nina Mason Pulliam Legacy Scholars

The Nina Mason Pulliam Legacy Scholars program is a collaboration between the Nina Mason Pulliam Charitable Trust and four institutions of higher education in Arizona and Indiana, including Arizona State University. The program provides educational opportunities for individuals who would not normally receive traditional academic scholarships and whose personal commitments and financial circumstances would preclude their college attendance without substantial, long-term scholarship support.

Piper Servant Leadership Program

The Piper Servant Leader Network welcomes ASU undergraduate students who are curious about the nonprofit sector and how it connects to their field of study. Launched with support from the Virginia G. Piper Charitable Trust, the program offers hands-on experience and reflective learning experiences to help students explore purpose-driven work in the nonprofit sector, shaping not just their careers, but their lives.

Public Service Academy

The nation's first Public Service Academy and Next Generation Service Corps leadership development programs answer the nation's call for character-driven leaders who are able to collaborate across the public, private, nonprofit and military sectors to help solve complex social issues. Student mission teams engage with community partners, university affiliates and the public to identify challenges, innovate solutions and affect change in their communities. The program has graduated 650+ students from 150+ unique majors since its inception in 2015.

Spirit of Service Scholars

The Spirit of Service Scholars program addresses the present and future workforce needs in the public and nonprofit sectors by awarding prestigious scholarships to outstanding students and providing them with an extraordinary academic and real-world education, a life-long interdisciplinary network and committed, effective mentors. Participants from across ASU receive a \$5,000 scholarship and engage in public service leadership through a year-round program.

Westward Ho Community Collaborative

The ASU Community Collaborative is a student-run clinic and community center located on the first floor of the historic Westward Ho building that provides a wide range of assistance to the 300 low-income, older adults and individuals with disabilities who live there. Students deliver social services including counseling and community assistance, as well as educational and cultural enrichment opportunities. In addition to the benefits for residents, the facility also serves as a valuable training ground for students working under faculty supervision.

College-level centers and initiatives

Action Nexus on Housing and Homelessness

The Action Next harnesses university resources and connects the efforts of existing systems and agencies throughout Maricopa County to collaboratively drive solutions forward. Working with community partner agencies, the Action Nexus team identifies new and existing opportunities for system alignment, offers training on solutions such as shared housing options and involves ASU undergraduate and graduate students in research, evaluation and internship opportunities to combat Arizona's homelessness crisis.

Design Studio for Creative Solutions

The Design Studio for Community Solutions partners with local stakeholders to devise practical solutions to complex issues. The Design Studio team holds the ASU design aspirations of Social Embeddedness and Principled Innovation as foundational to planning, ideating and implementing collaborative projects in the Maryvale neighborhood of Phoenix. In 2023, the One Square Mile Initiative, created through the generous 2018 gift from Mike and Cindy Watts and administered by the Design Studio, was honored with the ASU President's Medal for Social Embeddedness for its community impact.

Morrison Institute for Public Policy

For more than 40 years, Morrison Institute for Public Policy has served as Arizona's premier public policy research organization. The team's professional researchers work with government agencies and nonprofits of all sizes and missions, including direct service organizations and foundations, to examine trends, policies and practices. The institute bridges the gap between academic scholarship and public policy development through its services to public and private sector clients and its independent research agenda.

Next Generation Service Corps Center

The Next Generation Service Corps Center at Arizona State University serves as a hub for a network of 27 universities in 18 states across the country that are implementing their own versions of the Next Generation Service Corps program model. The center provides partner institutions with tailored program development assistance, member retreats, training workshops and ongoing assistance to strengthen public service pathways for students across the country.

Pastor Center for Politics and Public Service

The Pastor Center for Politics and Public Service was founded in late 2015 as a result of a shared vision by Arizona Congressman Ed Pastor and ASU to provide the practical experiences, skill, and networking opportunities for students to become effective civic and political actors. The center promotes political engagement and public service among ASU students and the broader community, and serves on a national stage as one of 25 university-based public service institutes participating in Harvard University's National Campaign for Political and Civic Engagement, launched by the Kennedy School's Institute of Politics.

Spark Center for Innovation in Learning

The Spark Center for Innovation in Learning, founded in partnership with retired U.S. Senator Kyrsten Sinema, draws expertise from across the ASU enterprise, including translational science, education, public health and venture development to accelerate breakthroughs in AI-driven technologies that support neurodivergent individuals throughout their educational journeys. The center's flagship Global AI Competition fuels interdisciplinary partnerships and innovation that shape the future of learning.



30+ research centers, offices and labs

Centers

[Center for an Independent and Sustainable Democracy](#)

[Center for Child Well-being](#)

[Center for Correctional Solutions](#)

[Center for Emergency Management and Homeland Security](#)

[Center for Local Government Education and Innovation](#)

[Center for Organization Research and Design](#)

[Center for Problem-Oriented Policing](#)

[Center for Science, Technology, and Environment Policy Studies](#)

[Center for Sustainable Tourism](#)

[Center for Violence Prevention and Community Safety](#)

[Center on Technology, Data and Society](#)

[Congressman Ed Pastor Center for Politics and Public Service](#)

[Family Violence Center](#)

[Global Center for Applied Health Research](#)

[Global Center for Technology Transfer](#)

[Kyl Center for Water Policy](#)

[Lodestar Center for Philanthropy and Nonprofit Innovation](#)

[Morrison Institute for Public Policy](#)

[Next Generation Service Corps Center](#)

[Osher Lifelong Learning Institute](#)

[Southwest Interdisciplinary Research Center](#)

Labs in the School of Criminology and Criminal Justice

[Children in the Law](#)

[Developmental Etiology of Externalizing Problems](#)

[Public Safety Innovation PSI Lab](#)

[Research on Violent Victimization](#)

[Youth Justice Collaborative](#)

Offices in the School of Social Work

[Office of American Indian Projects](#)

[Office of Gender-based Violence](#)

[Office of Gerontological Initiatives](#)

[Office of Global Social Work](#)

[Office of Sex Trafficking Intervention Research](#)

Labs in the School of Public Affairs

[Mechanics of Democracy Lab](#)



Advancing the ASU Charter

The Watts College of Public Service and Community Solutions puts hands and feet to the ASU Charter.

When the Charter calls us to measure ourselves by whom we include and how they succeed, we cultivate one of ASU's most inclusive environments. The Watts College's student population features one of the university's highest concentrations of underrepresented racial and ethnic groups, first-generation college students, veterans, transfer students and those with significant financial need.

When the Charter says ASU stands for advancing research and discovery of public value, we respond with 30+ research centers, offices and labs generating solutions to complex problems that improve societal well-being.

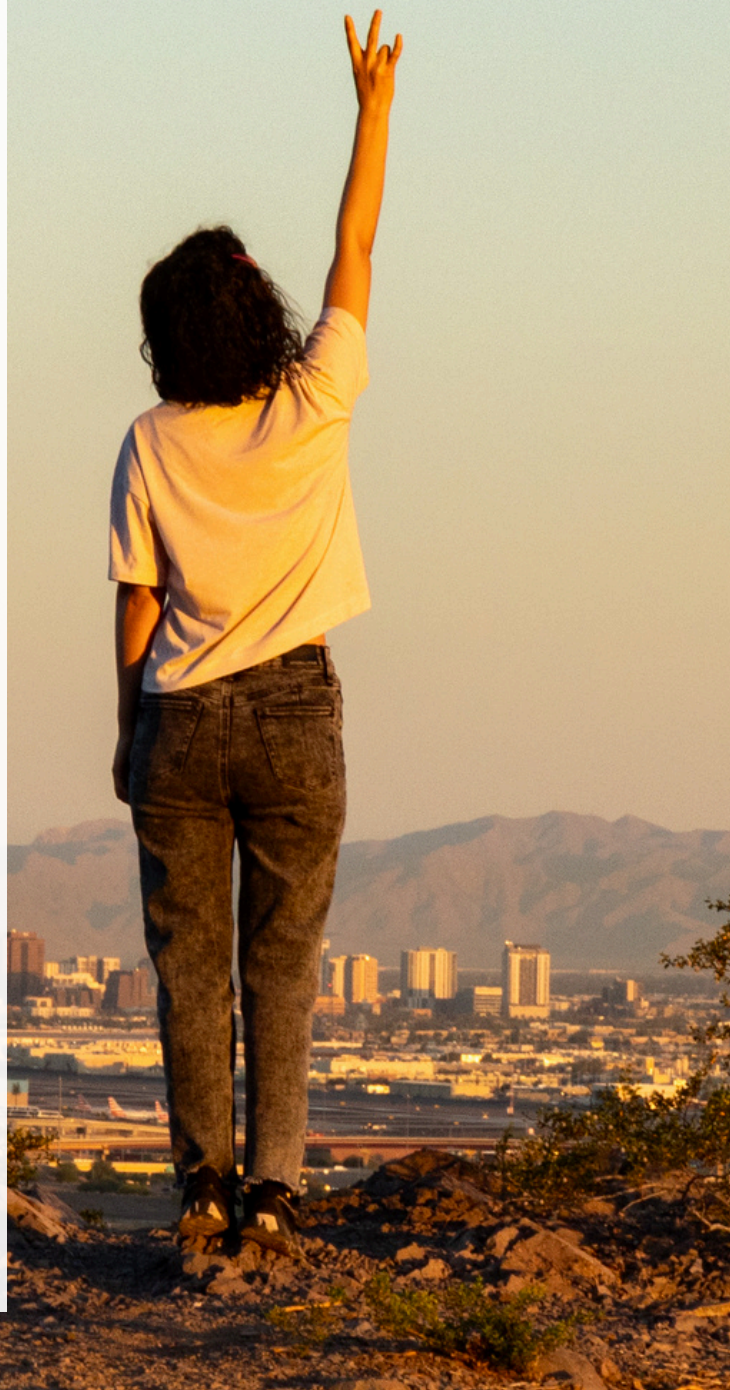
Our social work research addresses health and behavioral health disparities through systems- and equity-focused inquiry, including work to improve child welfare outcomes, prevent interpersonal violence, and disrupt the exploitation of vulnerable populations.

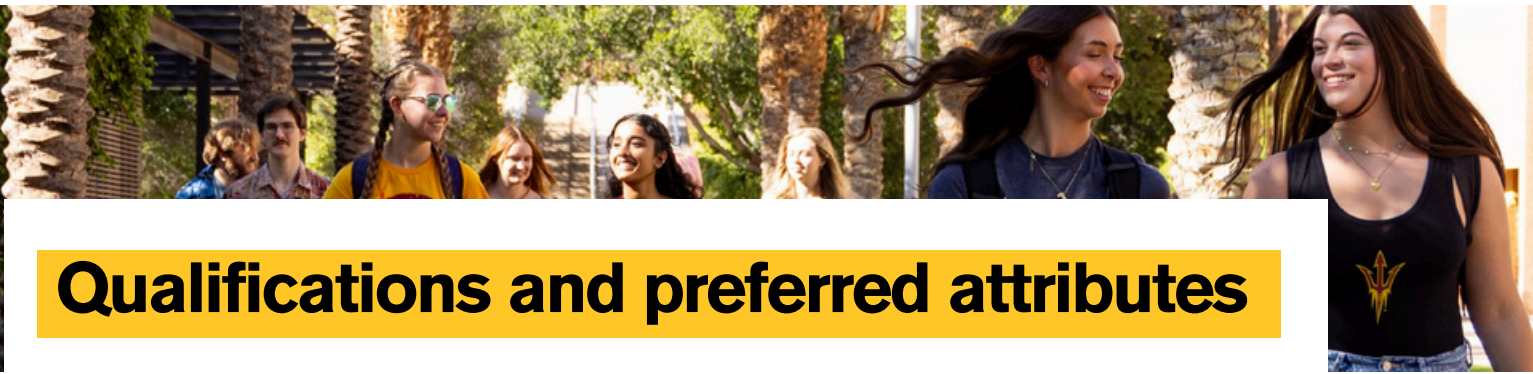
The research of our criminologists helps reform policing, reduce crime and keep offenders from returning to prison.

Our public affairs research increases the efficiency of local government, helps communities manage disasters and explores new ways for citizens to participate in democracy.

Our community resources and development faculty bring a multi-disciplinary systems approach to the study of community, with the intent of creating better places to live, work, play and visit.

And, finally, when the Charter commits us to assuming fundamental responsibility for the economic, social, cultural and overall health of the communities we serve, we equip students with the tools they need to fearlessly tackle the most daunting challenges facing their neighborhoods, states, countries and beyond — and send them out into the world believing **there's no limit to what they can do**.





Qualifications and preferred attributes

Essential Functions

Reporting directly to the Executive Vice President and University Provost, the Dean will provide academic and administrative leadership for the Watts College, representing it inside and outside the University. The Dean must be committed to working with the Provost, the other Deans and University leaders, and the faculty to achieve University academic goals for excellence in research and learning, and to further goals for inclusion and impact. Responsibilities include budget, strategic planning, resource development, personnel decisions, student academic affairs, faculty, staff and student development, promotion of research, and planning and implementation of degree programs.

Minimum Qualifications

- An earned doctorate in a Watts College discipline or related field;
- A record of distinguished scholarly research and professional accomplishments that merits appointment as a full professor with tenure, and
- Previous service in an academic leadership role (dean, department chair, associate dean, associate director or equivalent), ideally within parks, recreation, nonprofit leadership, tourism, public affairs, social work, community planning, criminal justice or other public service oriented disciplines including strategic planning, personnel management, and budgeting.

Desired Qualifications

- Commitment to the ideals of ASU's mission and Charter: access, excellence and impact, and the ability to foster an atmosphere of belonging for students, staff and faculty.
- An empathetic leadership style and a commitment to a culture of transparency.
- Demonstrated commitment and ability to advance the academic excellence of schools and programs, building on accomplishments and developing strategic opportunities for the future.
- Experience leading curricular reform, launching new programs or centers, organizational restructuring and strategic growth, especially relevant in a college to meet changing social and fiscal challenges.
- Demonstrated commitment to promoting the provision of dynamic student experiences in and out of the classroom (online, in person and hybrid modalities) that lead to success beyond the classroom and graduation.
- Attuned to emerging technologies such as AI and their implications for academic as well as the professions for which students are preparing.
- Experience fostering a robust research environment and supporting faculty research excellence through strengthening existing centers, identifying new opportunities, and facilitating collaboration among cross disciplinary teams.
- A proven record of success in attaining federal research funding and the ability to support faculty in navigating the changing external funding landscape.
- Proven record in fiscal management and resource allocation.
- Commitment to engaging and supporting staff and faculty at all levels, across all career tracks, including faculty promotion, tenure, and renewal; staff career development, retention efforts, mentoring, and professional development.
- Experience supervising executive and senior leaders.
- Proven capacity to build and sustain relationships across sectors: academia, government, tribal nations, nonprofits, private sector, community organizations, foundations, donors, alumni, and external stakeholders.
- Demonstrated ability engaging with alumni and developing relationships to foster philanthropic support.
- A commitment to public service and community well-being with demonstrated success in developing partnerships and solutions to address real-world problems.
- Excellent communication skills and the ability to serve as a connector and conduit for information between University leadership and the Watts College, including advocating for Watts College priorities.

Greater Phoenix

Phoenix offers the amenities of a major metropolitan region. As the fifth largest state in the U.S. and one of the most dynamic and rapidly growing regions in the nation.

Climate

Enjoy 300 days of sunshine a year.

Arts and Culture

Greater Phoenix is a rich arts and cultural environment with museums, theater, concert halls, and cultural centers, such as the renowned Heard Museum, Phoenix Art Museum, Arizona Science Center, Phoenix Symphony, Arizona Opera, Ballet Arizona and the Arizona Theatre Company.

Outdoors

Phoenix has a number of lakes just a short drive away offering opportunities for boating, sailing, windsurfing, water and jet skiing, fishing and more. The area is home to dozens of parks and preserves — both in and around the city — with hundreds of miles of multiuse trails for hiking and biking. The state is home to three national parks, including the Grand Canyon, thirteen national monuments, and other popular destination spots like Sedona.

Sports

All three of Arizona's major professional sports teams — Arizona Cardinals (NFL), Phoenix Suns (NBA) and Arizona Diamondbacks (MLB) — call the metro Phoenix area home, as do the Phoenix Mercury (WNBA), Arizona Rattlers (IFL) and Phoenix Rising FC (USL). The area has over 170 golf courses.

Cost of Living

Greater Phoenix offers a variety of amenities of a major metropolitan region without the high cost of living. As the fifth largest state in the U.S. and one of the most dynamic and rapidly growing regions in the nation, living and working here is both exciting and affordable.

Low Tax Position

Low personal income taxes and low effective property tax rates offer affordability and opportunities for everyone to thrive.

Business and Industry

Arizona is home to a surging industrial ecosystem, early stage entrepreneurs, and tech-savvy millennial talent who are breaking new ground across a wide range of industry growth sectors. What's more, Arizona offers a robust portfolio of programs and resources supporting both large and emerging tech companies. The state's rich startup culture continues to thrive and is a preferred choice for technology companies seeking growth. Leading startups have collectively taken advantage of Arizona's high-skills talent base. Arizona's solid reputation and assertive stance on innovation led Fast Company to rank Arizona No. 1 in the country for "entrepreneurial activity."





Search Timeline

Target Date for Application: **March 5, 2026**

Semifinalist interviews (via Zoom): Late March 2026

Finalist campus visits: Mid - Late April 2026

Start date: July 1, 2026 (flexibility up to the end of November, but earlier is preferred.)

Applications, inquiries and nominations

AGB Search is pleased to assist Arizona State University with this leadership search.

To apply for the Dean of Watts College position, candidates are requested to submit the following:

1. A curriculum vitae;
2. A letter of interest that addresses how the candidate's experience and qualifications connect with the required/desired qualifications and priorities as expressed in this position profile; and
3. Contact information for five references (to be contacted with candidate's permission at a later date)

For best consideration, applications should be submitted by **March 5, 2026** to the AGB Search application portal at: [Dean, Watts College](#). The search will remain open until an appointment is made.

Nominations and expressions of interest in the Dean, Watts College of Public Service and Community Solutions position are encouraged. Please direct them to ASUDeanWattsCollege@agbsearch.com or to the AGB search consultants listed below:

Kimberly Templeton, JD, Principal
kimberly.templeton@agbsearch.com
C: 540.761.9494

Concetta Stewart, PhD, Principal
concetta.stewart@agbsearch.com
C: 908.341.2178

Anne Hoffman, Executive Search Associate
anne.hoffman@agbsearch.com
C: 805.490.9161

Arizona State University is a VEVRAA Federal Contractor and an Equal Opportunity/ Affirmative Action Employer. All qualified applicants will be considered without regard to race, color, sex, religion, national origin, age, disability, veteran status, sexual orientation, gender identity or any other basis.



@ASUPublicService

Watts College of Public Service and Community Solutions
411 N. Central Avenue, Suite 750, Phoenix, AZ 85004

AGB
SEARCH

Advancing Higher Education Leadership