



University of
Northern Iowa

FACT BOOK 2020-2021



Institutional Research & Effectiveness

Within a challenging and supportive environment, the University of Northern Iowa engages students in high-quality and high-impact learning experiences and emphasizes excellence in teaching and scholarship.

Quick Reference

University President	Mark A. Nook	Residence Hall Occupancy	2,953
Board of Regents President	Michael Richards	Number of Financial Aid Awards	40,001
University Accreditation	Higher Learning Commission (HLC)	Fall 2020 Employees	
		Faculty and Institutional Officers	580
		Professional and Scientific	608
		General Service Staff	462
Number of Colleges	4	Total	1,650
Number of Academic Departments	34	2020 Current Funds Revenues	\$388,439,078
Enrollment 2020 (Fall Headcount)		2020 - 2021 Sponsored Funding Awarded	\$46,874,887
Undergraduate	8,304	Academic Year 2020 - 2021 Tuition and Fees	
Graduate	1,218	Undergraduate Resident	\$7,666
Total	9,522	Graduate Resident	\$9,159
Enrollment 2020 (Fall FTE)		Undergraduate Nonresident	\$18,207
Undergraduate	7,749	Graduate Nonresident	\$19,633
Graduate	888	Academic Year 2020 - 2021 Room and Board	\$9,160
Total	8,637	Electronic Journals Available in Library	89,939
2019 - 2020 Degrees Awarded			
Baccalaureate (Bachelor's)	2,235	Location	Cedar Falls, IA
Master's	437	Homepage Address	http://www.uni.edu
Specialist	7	Office of Enrollment Services Phone Number	800-772-2037
Doctorate	11		
Total	2,690		
Total Living Alumni	122,683		
Student Financial Aid	\$104,309,611	For an electronic version of the fact book, visit our web site at:	http://www.uni.edu/ir/uni-facts



FACT BOOK 2020-2021

University of Northern Iowa
Institutional Research & Effectiveness
Cedar Falls, IA 50614-0005
319-273-3050 | oire@uni.edu

Student Contributor: Mark Spidle

Graphic and Publication Support: Office of University Relations

Data Contributor: Institutional Research & Effectiveness

Table of Contents

Quick Reference.....	Inside front cover
Mission Statement.....	1
UNI Organizational Chart.....	2
UNI Administration.....	3
Definitions of Terms Used.....	4-5
Calendar.....	6

New Students

Fall New Students.....	9
New Student Applications, Admissions and Enrolled.....	10
New Students Enrolled by Residence.....	11
New Freshmen Enrollment by Residence.....	12
New Undergraduate Transfer Students by Type of Transfer College.....	13
New Freshmen ACT Composite Scores and High School Class Rank.....	14

Enrollment

Fall Students Profile by College.....	17
Headcount Enrollment.....	18
Headcount Enrollment by Level.....	19
Undergraduate Enrollment by Age.....	20
Undergraduate Headcount by College Fall.....	21
Undergraduate Transfer Headcount by College Fall.....	22
Fall Enrollment by Residence.....	23
Enrollment by Residence.....	24
Fall Enrollment by Race/Ethnicity.....	25-26
Fall On-Campus Headcount and FTE Enrollment by Level.....	27
First Major Only by College and Level Fall.....	28
Annual Degrees Awarded by Level.....	29
Degrees Granted by College.....	30
Degrees Granted by Race/Ethnicity.....	31
Undergraduate Retention and Graduation Rates.....	32
Continuing Education Credit Enrollment Trends.....	33
Continuing Education Courses Offered.....	34
Web-Based Learning Management System (LMS).....	35
Fall Semester Residence Hall Occupancy by Gender and Level.....	36

Alumni

Total Living Alumni by College.....	39
Total Living Alumni by College.....	40
Alumni by State.....	41
Alumni by Iowa County.....	42
Post-Graduation Status of Bachelors Degree Recipients.....	43
Post-Graduation Status of Graduate Degree Recipients.....	44
Undergraduate Plans for Further Education.....	45
Graduate Plans for Further Education.....	46

Faculty and Staff

Fall Faculty Profile by College.....	49
Fall Faculty by College, Legal Sex and Tenure Status.....	50-51
UNI Workforce by Employment Categories.....	52
UNI Workforce Headcount and FTE by Employment Categories.....	53
UNI Workforce by Race/Ethnicity.....	54
UNI Workforce by Employment Categories and Race/Ethnicity.....	55
UNI Workforce Headcount and FTE by Employment Categories and College.....	56
UNI Workforce Headcount by Employment Categories, Legal Sex and College Fall.....	57
UNI Workforce by Employment Categories, Level and College Fall.....	58
UNI Workforce by Employment Categories, Level and Legal Sex Fall.....	59
UNI Temporary Workforce Headcount and FTE by Employment Categories.....	60

Budget and Finance

Statement of Revenues, Expenses and Changes In Net Assets.....	63-64
Financial Aid Programs by Source of Aid.....	65
Student Financial Aid Programs.....	66
Full-Time Undergraduate Student Tuition and Fees.....	67
Full-Time Graduate Student Tuition and Fees.....	68
Sponsored Project Proposals and Awards.....	69

General Information

Library Statistics.....	73-74
International Students by Country.....	75
International Students by College.....	76
Top 5 Countries of Origin for International Students.....	77
UNI Study Abroad Students by College and Classification.....	78
UNI Study Abroad Students by Term.....	79
Incoming International Exchange Students by Country.....	80
Top 5 Countries for UNI Study Abroad Students.....	81
UNI Services to Businesses, Communities and Local Government.....	82
UNI Carnegie Classification.....	83
Iowa Economic Profile.....	84

Peer Institutions

Undergraduate Enrollment and Costs.....	87
Faculty by Rank.....	88
Faculty Average Salaries by Rank.....	89
Undergraduates Receiving Student Financial Aid.....	90
Retention Rates.....	91
Degrees Granted in Academic Year.....	92

Campus Map.....	Inside back cover
-----------------	-------------------

Mission Statement

INSTITUTIONAL MISSION

Within a challenging and supportive environment, the University of Northern Iowa engages students in high-quality and high-impact learning experiences and emphasizes excellence in teaching and scholarship.

VISION STATEMENT

Offering personalized attention to students, the University of Northern Iowa will be a diverse and inclusive campus community that provides an engaged education empowering students to lead locally and globally.

VALUES

As a university community we are guided by the following core values:

Academic Freedom – the freedom of inquiry and expression in teaching and scholarship

Access – an inclusive educational environment that is accessible and affordable

VALUES (continued)

Accountability – a commitment to integrity, responsibility and the highest ethical standards integrated into all University practices

Collaboration – a commitment to work together to achieve our shared vision, mission, and goals

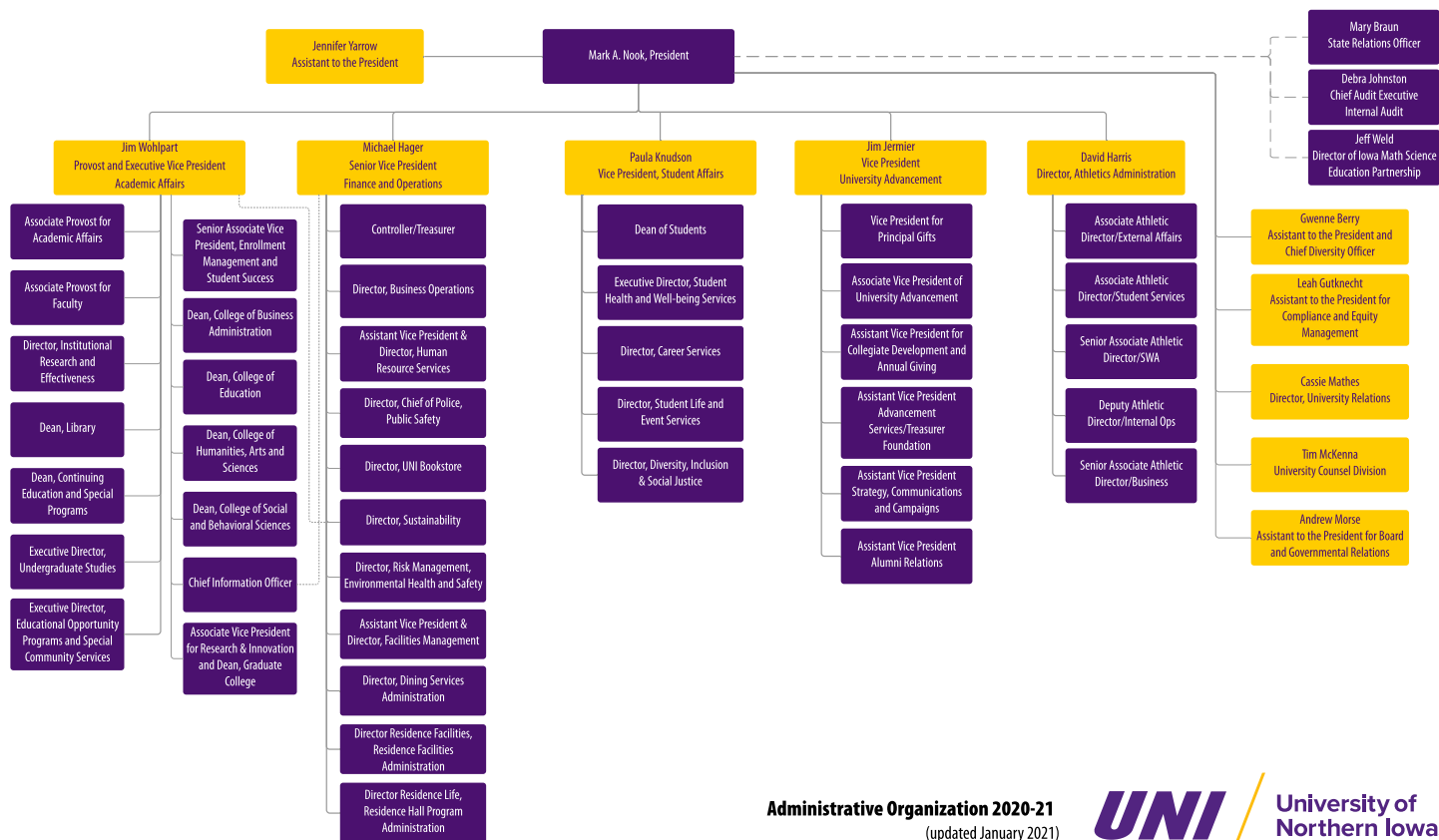
Community – a caring and safe community, characterized by civility and respect, which stands in solidarity against any actions that exclude, discriminate against, or silence members of our community

Diversity – the cultivation of a diverse and inclusive learning and work environment

Engagement – active participation in transformative, innovative, and lifelong learning in a global society

Excellence – a commitment to the pursuit of excellence in individual and collective endeavors

Sustainability – a vibrant community and campus that is economically sound, environmentally responsible, and socially just



Administrative Organization 2020-21
(updated January 2021)



UNI Administration

PRESIDENT	Mark A. Nook
EXECUTIVE VICE PRESIDENT and PROVOST	Jim Wohlpart
SENIOR VICE PRESIDENT for FINANCE and OPERATIONS	Michael Hager
VICE PRESIDENTS	
Vice President for Student Affairs.....	Paula Knudson
Vice President for University Advancement and President of the UNI Foundation.....	Jim Jermier
ASSISTANT TO PRESIDENT, BOARD and GOVERNMENTAL RELATIONS	Andrew Morse
ASSISTANT TO PRESIDENT and CHIEF DIVERSITY OFFICER	Gwenne Berry
ASSISTANT TO PRESIDENT, COMPLIANCE and EQUITY MANAGEMENT	Leah Gutknecht
DIRECTOR OF ATHLETIC ADMINISTRATION	David Harris
DIRECTOR OF UNIVERSITY RELATIONS	Cassie Mathes
SENIOR ASSOCIATE VICE PRESIDENT for ENROLLMENT MANAGEMENT	Kristin Woods
ASSOCIATE VICE PRESIDENT for RESEARCH & INNOVATION	Jennifer Waldron
ASSOCIATE PROVOSTS	
Associate Provost for Academic Affairs.....	Patrick Pease
Associate Provost for Faculty Affairs.....	John Vallentine
DEANS	
College of Business Administration.....	Leslie Wilson
College of Education.....	Colleen Mulholland
College of Humanities, Arts and Sciences.....	John Fritch
College of Social and Behavioral Sciences.....	Brenda Bass
Continuing Education and Special Programs.....	Kent Johnson
Graduate College	Jennifer Waldron
Library.....	Theresa Westbrook

Definitions of Terms Used

ENROLLMENTS

Headcount: The count of each student enrolled for one or more courses taken in a semester following the second week of the semester's start.

Full-Time Student: An undergraduate student enrolled for 12 or more credit hours per semester and a graduate student enrolled for 9 or more credit hours per semester.

FTE (Full-Time Equivalent): An enrollment unit used to represent a student enrolled for a full course of study. It is calculated by dividing total credit hours generated by 15.0 for undergraduate students and by 9 for graduate students for a semester FTE.

Unclassified/Undeclared Student: A student who has enrolled in instructional courses but has not been officially accepted into one of the institution's authorized degree programs.

Freshman: A first-year undergraduate student.

First-Time First-Year Student: A student attending any institution for the first-time at the undergraduate level. Includes students enrolled in the Fall term who attended college for the first time in the prior Summer term. Also includes students who entered with advanced standing (college credits earned before graduation from high school).

First-Time Student: A student attending any institution for the first time at the level enrolled. Includes students enrolled in the Fall term who attended a postsecondary institution for the first time at the same level in the prior Summer term. Also includes students who entered with advanced standing (college credit earned before graduation from high school).

Graduation Rate: Rate required for disclosure and/or reporting purposes under Student Right-to-Know. Calculated as the total number of completers within 150 percent of normal time divided by the revised cohort minus any allowable exclusions.

FACULTY AND STAFF

Faculty (Instruction/Research/Public Service): Persons whose specific assignments customarily are made for the purpose of conducting instruction, research, or public service as a principle activity (or activities), and who hold academic rank titles of professor, associate professor, assistant professor, instructor, lecturer or the equivalent of any of these academic ranks. This category excludes president, vice presidents and deans. Also excluded are faculty on leave without pay.

Executive, Administrative and Managerial: Persons whose assignments require primary (and major) responsibility for management of the institution, or a customarily recognized department or subdivision, thereof. Assignments require the performance of work directly related to management policies or general business operations of the institution, department or subdivision. It is assumed that assignments in this category customarily and regularly require the incumbent to exercise discretion and independent judgment and to direct the work of others. Included in this category are all officers holding titles such as president, vice president, dean, director or the equivalent, as well as officers subordinated to any of these administrators with such titles as associate dean, assistant dean, executive officer of academic departments (department heads or the equivalent) if their principal activity is administrative.

Continued on next page

Definitions of Terms Used

Continued:

BUDGET AND FINANCE

Current Funds Expenditures (and Transfers): The costs incurred for goods and services used in the conduct of the institution's operations. Includes the acquisition cost of capital assets, such as equipment and library books, to the extent current funds are budgeted for and used by operating departments for such purposes.

Current Funds Revenues: Unrestricted gifts, grants and other resources earned during the reporting period and restricted resources to the extent that such funds were expended for current operating purposes. Excludes restricted current funds received, but not expended, because these revenues have not been earned.

Academic Support (Expenditures) for Public Institutions:

Expenditures for the support services that are an integral part of the public institution's primary mission of instruction, research or public service. Includes expenditures for libraries, museums, galleries, audiovisual services, academic computing support, ancillary support, academic administration, personnel development and course and curriculum development. Academic support expenditures for public institutions are measured differently than academic support expenses for private institutions because private institutions' academic support expenses include depreciation costs and interest costs in amounts associated with this function. In addition, private institutions exclude amounts of capital expenditures associated with the academic support function. Finally, operations and maintenance expenses associated with the academic support function are included in the amounts reported by private institutions but are reported separately by public institutions.

Auxiliary Enterprises (Expenditures) for Public Institutions:

Expenditures for essentially self-supporting operations of the institution that exist to furnish a service to students, faculty or staff, and that charge a fee that is directly related to, although not necessarily equal to, the cost of the service. Includes mandatory and nonmandatory transfers. Examples are residence halls, food services, student health services, athletics, UNI-Dome and performing arts center. Auxiliary enterprise expenditures are measured differently for public and private institutions. Public institutions include capital expenditure amounts associated with auxiliary enterprise expenditures, but do not include depreciation, interest and operations and maintenance expenses. These amounts are included in private institutions' expenses of auxiliary enterprises.

OTHER

IPEDS: The Integrated Postsecondary Education Data System conducted by National Center for Education Statistics (NCES). IPEDS began in 1986 and involves annual data collections. Survey data are required from all postsecondary institutions that have a Program Participation Agreement (PPA) with the Office of Postsecondary Education, U.S. Department of Education. IPEDS also requests limited data from approximately 3,000 other schools offering postsecondary education programs.

HLC: The Higher Learning Commission (HLC) is an independent corporation that was founded in 1895 as one of six regional institutional accreditations in the United States.

CALENDAR

Semester/Date

Fall 2020

Monday, August 17

*

Tuesday, October 6

Wednesday, October 7

*

Thursday - Friday, November 26 - 27

Saturday, Monday - Wednesday, November 21, 23 - 25

Saturday, November 28

Thursday-Friday, December 24 - 25

Spring 2021

Friday, January 1

Monday, January 25

Monday, January 18

Tuesday, March 16

Wednesday, March 17

*

Monday - Friday, May 3 - 7

Saturday, May 8

Summer 2021

Monday, May 10

Monday, May 10

Monday, May 31

Friday, June 4

Monday, June 7

Monday, June 7

Friday, June 18

Monday, June 21

Friday, July 2

Monday, July 5

Tuesday, July 6

Friday, July 30

Event

Semester begins

University holiday

First half ends

Second half begins

Thanksgiving break

University holiday

Final exam week

Commencement

University holiday

University holiday

Semester begins

University holiday

First half ends

Second half begins

Spring break

Final exam week

Commencement

First 4 week session begins

First 6 week session begins

University holiday

First 4 week session ends

Second 4 week session begins

8 week session begins

First 6 week session ends

Second 6 week session begins

Second 4 week session ends

University holiday

Third 4 week session begins

All sessions end

Semester/Date

Fall 2021

Monday, August 23

Monday, September 6

Friday, October 15

Monday, October 18

Monday - Friday, November 22 - 26

Thursday - Friday, November 25 - 26

Monday - Friday, December 13 - 17

Saturday, December 18

Thursday-Friday, December 24 - 25

Spring 2022

Friday, December 31

Monday, January 10

Monday, January 17

Friday, March 4

Monday, March 7

Monday - Friday, March 14 - 18

Monday - Friday, May 2 - 6

Saturday, May 7

Summer 2022

Monday, May 9

Monday, May 9

Monday, May 30

Friday, June 3

Monday, June 6

Monday, June 6

Friday, June 17

Monday, June 20

Friday, July 1

Monday, July 4

Tuesday, July 5

Friday, July 29

* Calendar adjusted due to COVID-19



NEW STUDENTS

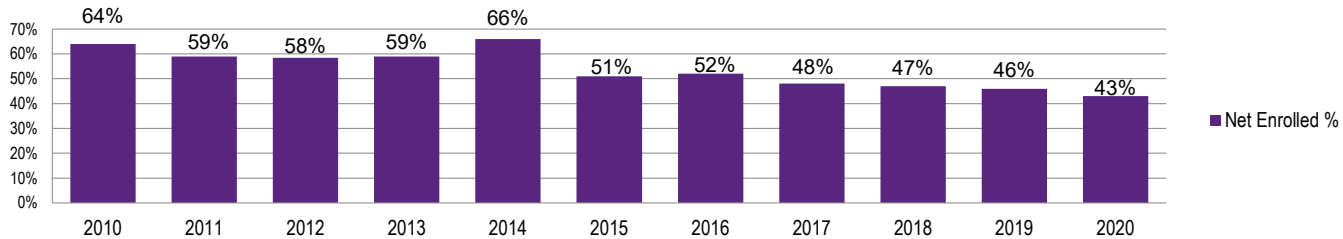


NEW STUDENTS

Fall 2020 New Students

							NET ENROLLED					
	Applications		Admissions		Net Enrolled*		Resident		Non-Resident		International	
	N	%	N	%	N	%	N	%	N	%	N	%
TOTAL	7,126		5,550		2,496		2,189		248		59	
Percent				77.9		35.0		87.7		9.9		2.4
Undergraduate												
New Freshmen	5,034	78.8	3,984	79.5	1,482	68.2	1,337	68.5	138	73.4	7	21.2
Transfers	1,357	21.2	1,027	20.5	692	31.8	616	31.5	50	26.6	26	78.8
Total	6,391		5,011		2,174		1,953		188		33	
Percent				78.4		43.4		89.8		8.7		1.5
Graduate												
Students	735		539		322		236		60		26	
Percent				73.3		59.7		73.3		18.6		8.1

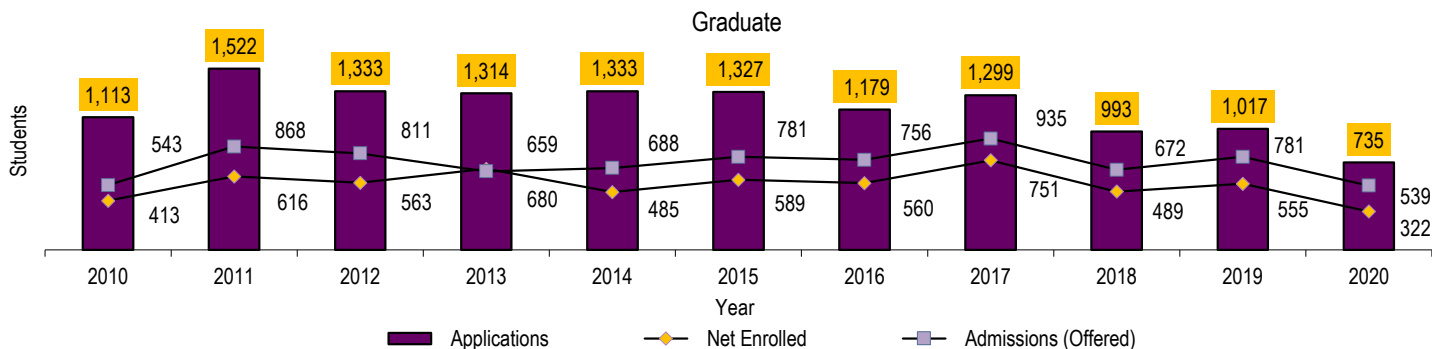
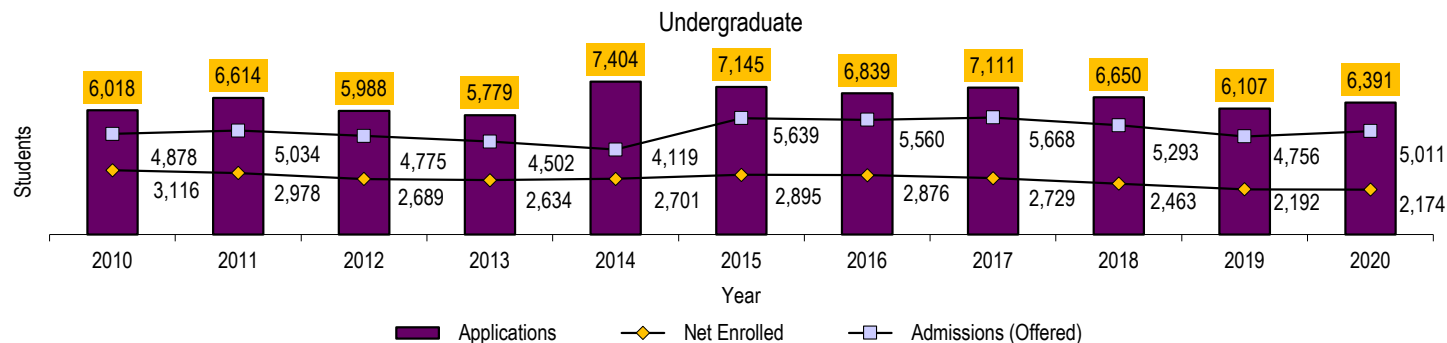
Undergraduate - Net Enrolled % of Admitted



The undergraduate data does not reflect unclassified new students.

*Enrolled as % of applied

New Student Applications, Admissions and Enrolled Fall Semester 2010 - 2020



New Students Enrolled by Residence 2010 - 2020

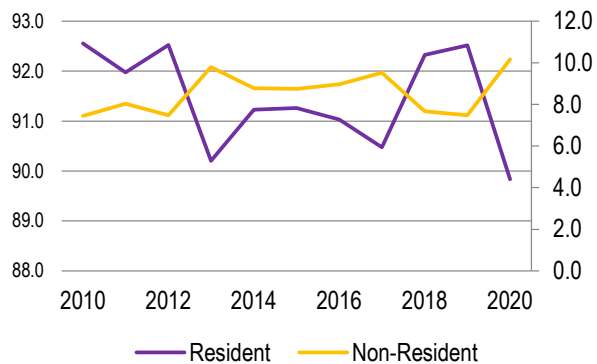
UNDERGRADUATE*

	Resident	Non-Resident	International Student
2010	2,884	158	74
2011	2,739	177	62
2012	2,488	156	45
2013	2,376	182	76
2014	2,464	159	78
2015	2,642	181	72
2016	2,618	188	70
2017	2,469	199	61
2018	2,274	150	39
2019	2,028	130	34
2020	1,953	188	33

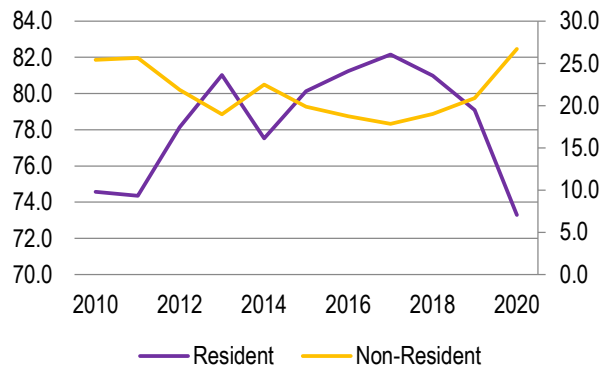
GRADUATE

	Resident	Non-Resident	International Student	Total	Annual Percent Change
2010	308	55	50	3,529	1.4
2011	458	121	37	3,594	1.8
2012	440	81	42	3,252	-9.5
2013	551	101	28	3,314	1.9
2014	376	81	28	3,186	-3.9
2015	472	81	36	3,484	9.4
2016	455	80	25	3,436	-1.4
2017	617	98	36	3,480	1.3
2018	396	63	30	2,952	-15.2
2019	439	86	30	2,747	-6.9
2020	236	59	27	2,496	-9.1

Undergraduate New Student %



Graduate New Student %

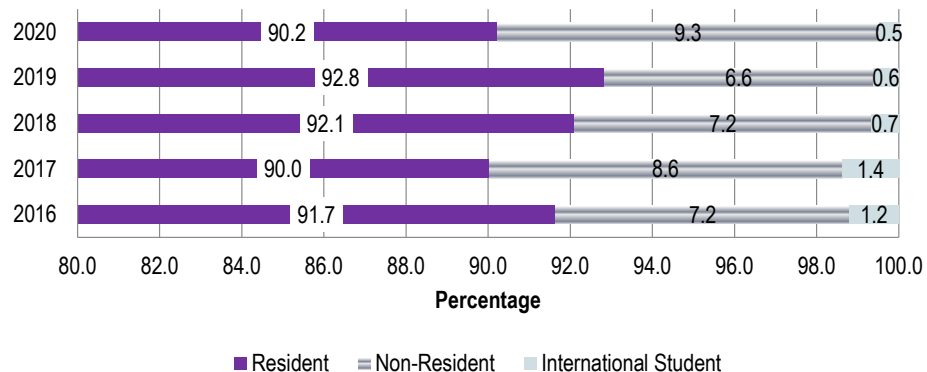


*New undergraduate students are only new freshmen and new transfers.

New Freshmen Enrollment by Residence 2016 - 2020

	2016		2017		2018		2019		2020	
	N	%	N	%	N	%	N	%	N	%
New Freshmen	2,000		1,834		1,661		1,465		1,482	
Annual Percent Change		4.4		-8.3		-9.4		-11.8		1.2
Resident	1,833	91.6	1,651	90.0	1,530	92.1	1,360	92.8	1,337	90.2
Non-Resident	143	7.2	158	8.6	120	7.2	96	6.6	138	9.3
International Student	24	1.2	25	1.4	11	0.7	9	0.6	7	0.5

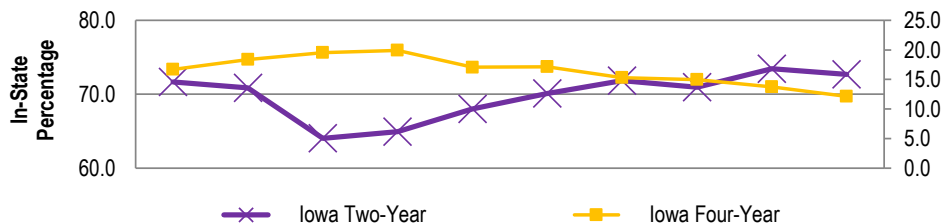
New Freshmen Enrollment by Residence



New Undergraduate Transfer Students by Transfer Type

	2010	2011	2012	2013	2014	2015	2016	2017	2018	2019	2020
TOTAL	1,138	1,041	985	912	904	979	876	895	802	727	692
Annual Percent Change	4.6	-8.5	-5.4	-7.4	-0.9	8.3	-10.5	2.2	-10.4	-9.4	-4.8
Iowa Two-Year Public and Private	830	746	698	584	587	666	614	643	569	534	503
Iowa Area Community Colleges	828	746	698	584	587	665	614	643	569	534	503
Iowa Two-Year Private	2	0	0	0	0	1	0	0	0	0	0
Iowa Four-Year Public and Private	183	174	181	178	180	167	150	137	120	100	84
Iowa Four-Year Public											
Iowa State University	32	32	21	25	32	30	23	22	18	24	15
University of Iowa	51	51	35	30	32	22	14	28	24	20	13
University of Northern Iowa*			25	40	32	29	31	23	28	14	4
Subtotal	83	83	81	95	96	81	68	73	70	58	32
Iowa Four-Year Private	100	91	100	83	84	86	82	64	50	42	52
Non-Iowa (US) Total	125	121	106	150	137	146	70	78	74	60	51
Two-Year Out of State	31	38	26	38	34	47	22	32	30	25	18
Four-Year Out of State	94	83	80	112	103	99	48	46	44	35	33

New Undergraduate Transfer Students



*Students transferring from UNI are returning UNI students pursuing a second BA or teacher license

New Freshmen ACT Composite Scores and High School Class Rank

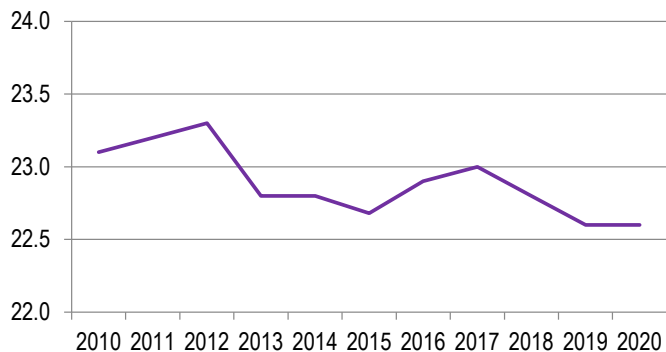
ACT Composite Scores

	Mean	75 th Percentile	25 th Percentile
2010	23.1	25.0	21.1
2011	23.2	25.0	21.0
2012	23.3	25.0	21.0
2013	22.8	24.0	20.0
2014	22.8	25.0	20.0
2015	22.7	25.0	20.0
2016	22.9	25.0	20.0
2017	23.0	26.0	20.0
2018	22.8	25.0	20.0
2019	22.6	25.0	20.0
2020	22.6	25.0	19.0

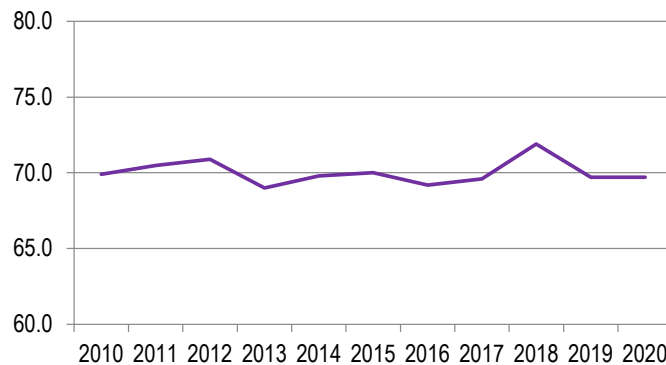
High School Rank

	Mean	Upper 10%	Upper 20%	Upper 50%
2010	69.9	17.6	36.2	84.0
2011	70.5	19.1	37.2	84.1
2012	70.9	20.0	38.9	84.6
2013	69.0	18.1	37.1	81.6
2014	69.8	17.0	35.9	83.1
2015	70.0	18.0	39.3	83.7
2016	69.2	17.3	36.9	81.4
2017	69.6	16.9	37.0	82.4
2018	71.9	20.4	40.6	86.0
2019	69.7	20.4	36.1	83.8
2020	69.7	21.4	41.1	84.2

ACT Mean Composite Score



High School Mean Rank





ENROLLMENT



ENROLLMENT

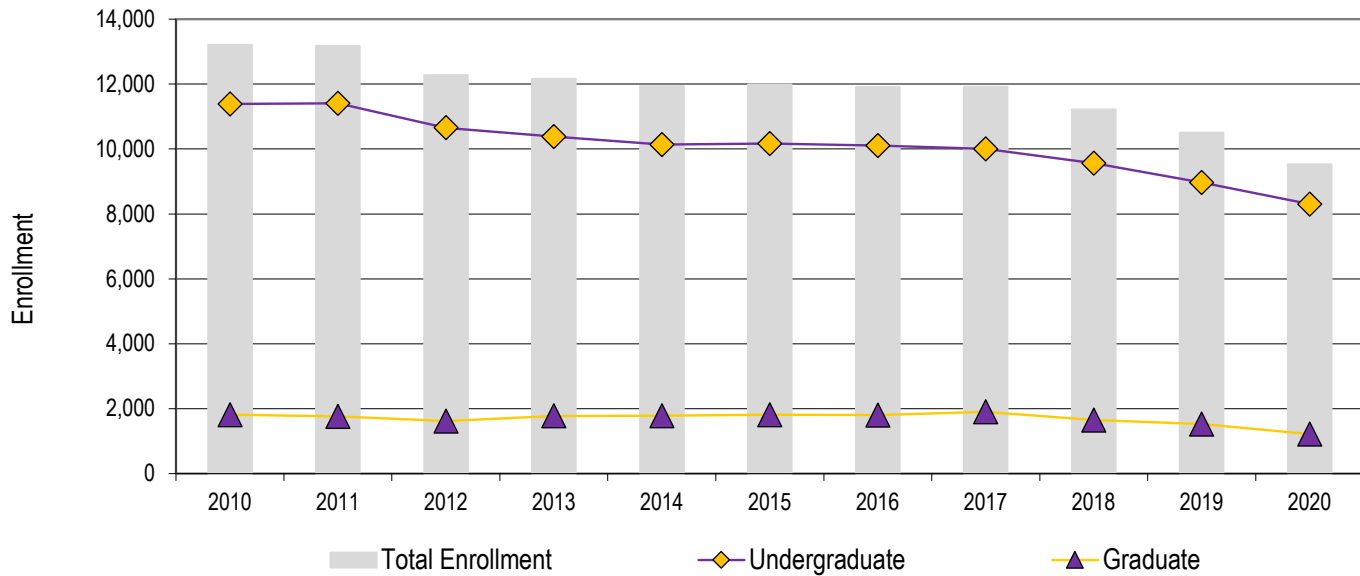
Fall 2020 Students Profile by College

	Total University	Business	Education	Humanities, Arts & Sciences	Social & Behavioral Sciences	No Specific College
TOTAL	9,522	1,769	2,259	3,031	1,726	737
Percent	100	19	24	32	18	8
Full-Time	8,064	1,548	1,841	2,690	1,497	488
Part-Time	1,458	221	418	341	229	249
Female	5,849	707	1,737	1,741	1,206	458
Male	3,673	1,062	522	1,290	520	279
Freshman	1,546	274	256	535	243	238
Sophomore	1,538	284	320	489	316	129
Junior	2,150	469	453	700	434	94
Senior	2,977	600	792	983	510	92
Unclassified	93					93
Graduate	1,218	142	438	324	223	91
International Students:						
Undergraduate	190	71	11	69	15	24
Graduate	160	110	11	22	9	8
1st Majors:						
Undergraduate	8,304	1,627	1,821	2,707	1,503	646
Graduate	1,218	142	438	324	223	91
2019-2020 Degrees Granted:						
Baccalaureate (Bachelor's)	2,235	460	511	764	424	76
Master's	437	40	139	145	98	15
Specialists	7		7			
Doctorates	11		9	2		

Headcount Enrollment 2010 - 2020

	UNDERGRADUATE			GRADUATE			Total	Annual Percent Change
	Full-Time	Part-Time	Total	Full-Time	Part-Time	Total		
2010	10,378	1,013	11,391	770	1,040	1,810	13,201	0.9
2011	10,209	1,199	11,408	742	1,018	1,760	13,168	-0.2
2012	9,679	976	10,655	682	936	1,618	12,273	-6.8
2013	9,330	1,050	10,380	638	1,141	1,779	12,159	-0.9
2014	9,122	1,020	10,142	597	1,189	1,786	11,928	-1.9
2015	9,127	1,042	10,169	562	1,250	1,812	11,981	0.4
2016	9,146	958	10,104	557	1,244	1,801	11,905	-0.6
2017	9,100	905	10,005	538	1,364	1,902	11,907	0.0
2018	8,745	816	9,561	519	1,132	1,651	11,212	-5.8
2019	8,228	745	8,973	454	1,070	1,524	10,497	-6.4
2020	7,632	672	8,304	432	786	1,218	9,522	-9.3

Headcount Enrollment by Level 2010 - 2020



Includes full-time and part-time students

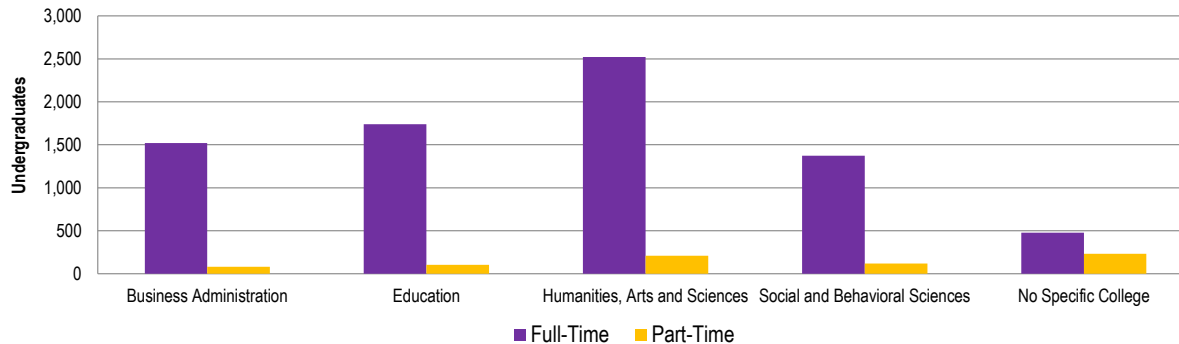
Undergraduate Enrollment by Age 2010 - 2020

Fall Semester	2010	2011	2012	2013	2014	2015	2016	2017	2018	2019	2020
Total Enrollment	11,391	11,408	10,655	10,380	10,142	10,169	10,104	10,005	9,561	8,973	8,304
Under 18	102	49	21	64	46	29	30	40	25	20	21
18	1,733	1,165	1,001	992	1,068	1,119	1,154	1,050	945	820	827
19	1,909	1,879	1,779	1,682	1,677	1,779	1,913	1,833	1,694	1,545	1,439
20	2,201	2,072	2,008	1,908	1,833	1,828	1,888	1,995	1,947	1,770	1,685
21	2,300	2,227	2,158	2,098	2,023	1,955	1,862	2,009	1,990	1,965	1,780
22	1,322	1,729	1,611	1,598	1,554	1,456	1,443	1,311	1,371	1,361	1,299
23	527	855	776	771	741	706	651	654	581	583	519
24	264	309	352	309	300	326	249	284	254	204	168
25	197	200	158	178	170	198	188	126	146	139	100
26	137	152	118	117	115	104	133	118	89	88	75
27	91	118	89	87	85	111	71	83	78	51	59
28	69	82	86	60	70	58	78	60	46	46	31
29	71	61	62	55	58	54	39	51	39	40	31
30-39	301	325	293	307	272	284	261	258	232	203	171
40-49	104	134	101	96	85	101	81	83	85	89	68
50-64	61	48	41	57	43	53	57	46	35	43	30
65 and older	2	3	1	1	2	8	6	4	4	6	1

Undergraduate Headcount by College Fall 2016 - 2020

	Full-Time					Part-Time				
	2016	2017	2018	2019	2020	2016	2017	2018	2019	2020
Total University	9,146	9,100	8,745	8,228	7,632	958	905	816	745	672
Business Administration	1,822	1,857	1,778	1,634	1,520	172	152	129	82	107
Education	2,074	2,119	2,001	1,917	1,738	121	105	124	102	83
Humanities, Arts and Sciences	3,090	3,042	2,870	2,736	2,523	290	294	223	209	184
Social and Behavioral Sciences	1,484	1,490	1,452	1,387	1,372	138	133	127	120	131
No Specific College	676	592	644	554	479	237	221	213	232	167

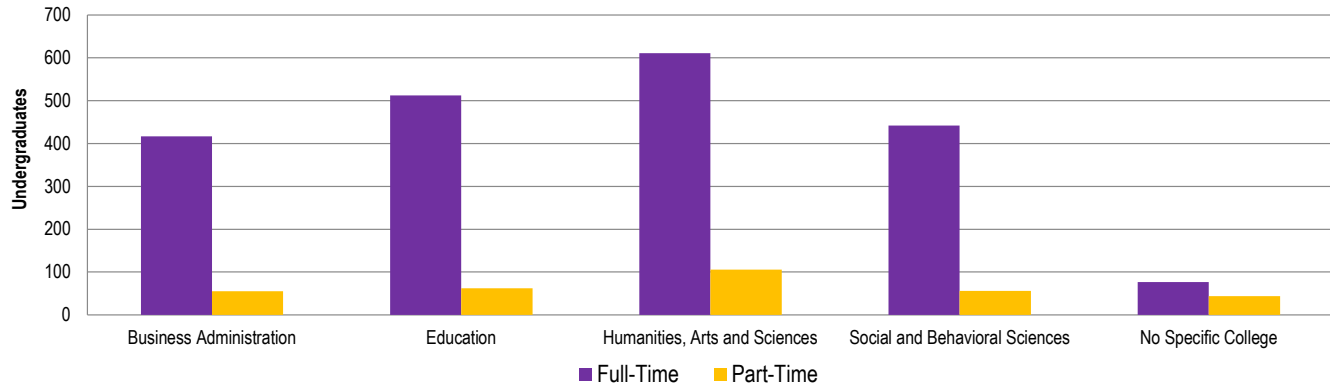
Fall 2020 Undergraduates by College



Transfer Headcount by College Fall 2016 - 2020

	Full-Time					Part-Time				
	2016	2017	2018	2019	2020	2016	2017	2018	2019	2020
Undergraduate Transfer	2,611	2,584	2,401	2,232	2,059	473	440	421	336	323
Business Administration	562	536	524	463	417	100	85	78	45	55
Education	628	653	576	547	512	76	66	90	68	62
Humanities, Arts and Sciences	871	823	745	709	611	177	180	135	119	106
Social and Behavioral Sciences	476	486	474	429	442	77	74	80	70	56
No Specific College	74	86	82	84	77	43	35	38	34	44

Fall 2020 Undergraduate Transfers by College



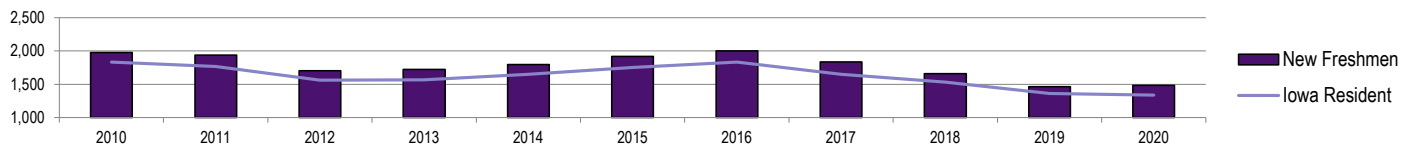
Fall 2020 Enrollment by Residence

	U.S. Iowa Resident		U.S. Non-Iowa Resident		International Student		TOTAL
	N	%	N	%	N	%	N
Enrollment	8,455	88.8	717	7.5	350	3.7	9,522
New Freshmen	1,337	90.2	138	9.3	7	0.5	1,482
Undergraduate	7,585	91.3	529	6.4	190	2.3	8,304
New Graduate	236	73.3	59	18.3	27	8.4	322
Graduate	870	71.4	188	15.4	160	13.2	1,218

Enrollment by Residence 2010 - 2020

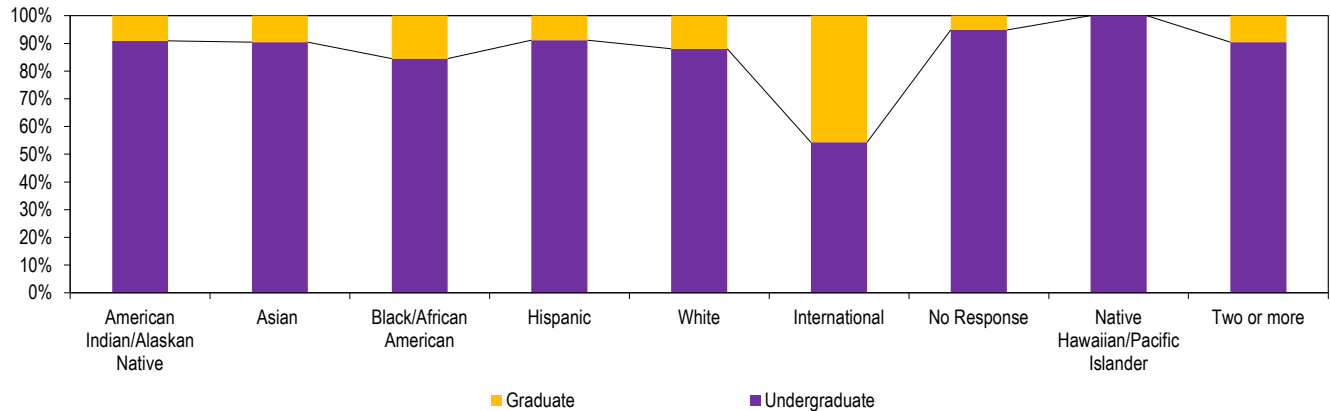
	2010	2011	2012	2013	2014	2015	2016	2017	2018	2019	2020	5 Yr % Change	10 Yr % Change
Fall Semester Enrollment	13,201	13,168	12,273	12,159	11,928	11,981	11,905	11,907	11,212	10,497	9,522	-20.5	-27.9
Iowa Resident	11,978	11,915	11,095	10,842	10,491	10,549	10,528	10,545	9,976	9,394	8,455	-19.9	-29.4
U.S., Non-Iowa Resident	743	765	724	797	811	816	829	815	756	718	717	-12.1	-3.5
International Student	480	488	454	520	626	616	548	547	480	385	350	-43.2	-27.1
New Freshmen	1,978	1,937	1,704	1,722	1,797	1,916	2,000	1,834	1,661	1,465	1,482	-22.7	-25.1
Iowa Resident	1,833	1,769	1,563	1,568	1,651	1,751	1,833	1,651	1,530	1,360	1,337	-23.6	-27.1
U.S., Non-Iowa Resident	107	133	119	132	112	131	143	158	120	96	138	5.3	29.0
International Student	38	35	22	22	34	34	24	25	11	9	7	-79.4	-81.6
Undergraduate	11,391	11,408	10,655	10,380	10,142	10,169	10,104	10,005	9,561	8,973	8,304	-18.3	-27.1
Iowa Resident	10,532	10,522	9,806	9,411	9,052	9,083	9,096	9,045	8,695	8,191	7,585	-16.5	-28.0
U.S., Non-Iowa Resident	526	541	530	578	603	605	604	587	569	532	529	-12.6	0.6
International Student	333	345	319	391	487	481	404	373	297	250	190	-60.5	-42.9
Graduate	1,810	1,760	1,618	1,779	1,786	1,812	1,801	1,902	1,651	1,524	1,218	-32.8	-32.7
Iowa resident	1,446	1,393	1,289	1,431	1,439	1,466	1,432	1,500	1,281	1,203	870	-40.7	-39.8
U.S., Non-Iowa Resident	217	224	194	219	208	211	225	228	187	186	188	-10.9	-13.4
International Student	147	143	135	129	139	135	144	174	183	135	160	18.5	8.8

New Freshmen



Fall 2020 Enrollment by Race/Ethnicity

	American Indian/ Alaskan Native		Asian		Black/ African American		Hispanic		White		International		No Response		Native Hawaiian/ Pacific Islander		Two or More	
	N	%	N	%	N	%	N	%	N	%	N	%	N	%	N	%	N	%
Enrollment	11	100	136	100	251	100	442	100	7,784	100	350	100	290	100	6	100	252	100
Undergraduate	10	90.9	123	90.4	212	84.5	403	91.2	6,857	88.1	190	54.3	275	94.8	6	100.0	228	90.5
Graduate	1	9.1	13	9.6	39	15.5	39	8.8	927	11.9	160	45.7	15	5.2	0	0.0	24	9.5
Percentage		0.1		1.4		2.6		4.6		81.8		3.7		3.1		0.1		2.7



Undergraduate 8,304
Graduate 1,218

Enrollment by Student Race/Ethnicity 2010-2020

	UNDERGRADUATE							GRADUATE						
	American Indian/ Alaskan Native	Asian/ Pacific Islander	Black/ African American	Hispanic/ Latino	Native Hawaiian/ Pacific Islander	Two or More	Total	American Indian/ Alaskan Native	Asian/ Pacific Islander	Black/ African American	Hispanic/ Latino	Native Hawaiian/ Pacific Islander	Two or More	Total
2010	21	105	303	232	4	103	768	4	19	80	44	0	7	154
2011	17	118	300	257	2	121	815	7	26	66	41	1	11	152
2012	21	107	300	280	4	143	855	3	21	67	33	0	10	134
2013	19	87	279	289	5	168	847	5	20	62	33	2	11	133
2014	20	90	285	339	7	195	936	5	18	54	38	0	15	130
2015	16	115	287	350	7	213	988	6	18	65	29	0	17	135
2016	28	128	273	388	9	192	1,018	5	13	57	39	0	23	137
2017	34	136	271	391	7	203	1,042	2	10	46	40	0	18	116
2018	35	136	265	371	7	207	1,021	1	10	45	40	0	13	109
2019	11	126	214	396	9	239	995	2	12	40	41	1	18	114
2020	10	123	212	403	6	228	982	1	13	39	39	0	24	116

Includes all international students and excludes white domestic students; other categories include American citizens, immigrants, asylees, and refugees only.

Fall On-Campus Headcount and Full-Time Equivalent (FTE) Enrollment by Level 2010 - 2020

	Headcount									FTE Enrollment								
	Undergraduate						Graduate			Undergraduate						Graduate		
	F	S	Jr	Sr	Un-Classified	Total	Master's	Advanced	Total	F	S	Jr	Sr	Un-Classified	Total	Master's	Advanced	Total
2010	2,340	2,181	3,037	3,574	259	11,391	1,289	521	1,810	2,139	2,068	2,827	3,159	108	10,301	1,076	304	1,380
2011	2,388	2,173	2,823	3,872	152	11,408	1,236	524	1,760	2,060	2,031	2,562	3,342	60	10,055	1,046	292	1,338
2012	2,091	2,096	2,737	3,589	142	10,655	1,161	457	1,618	1,891	1,999	2,533	3,153	54	9,630	977	266	1,243
2013	2,037	1,902	2,662	3,569	210	10,380	1,283	496	1,779	1,874	1,810	2,485	3,114	60	9,343	991	282	1,273
2014	2,047	1,928	2,437	3,470	260	10,142	1,232	554	1,786	1,899	1,818	2,260	3,065	77	9,119	907	285	1,192
2015	2,174	1,933	2,492	3,335	235	10,169	1,237	575	1,812	2,010	1,814	2,312	2,937	78	9,151	914	280	1,194
2016	2,232	2,104	2,430	3,177	161	10,104	1,258	543	1,801	2,063	1,980	2,263	2,785	49	9,140	932	233	1,165
2017	1,960	2,146	2,568	3,161	170	10,005	1,360	542	1,902	1,860	2,028	2,411	2,794	43	9,136	885	263	1,148
2018	1,766	1,959	2,491	3,186	159	9,561	1,199	452	1,651	1,709	1,867	2,366	2,834	44	8,820	858	225	1,083
2019	1,495	1,800	2,319	3,182	177	8,973	1,117	407	1,524	1,452	1,734	2,204	2,851	36	8,277	765	208	973
2020	1,546	1,538	2,150	2,977	93	8,304	828	390	1,218	1,488	1,494	2,070	2,676	21	7,749	672	216	888
Total Headcount:							9,522			Total FTE:							8,637	

First Major Only by College and Level Fall 2016 - 2020

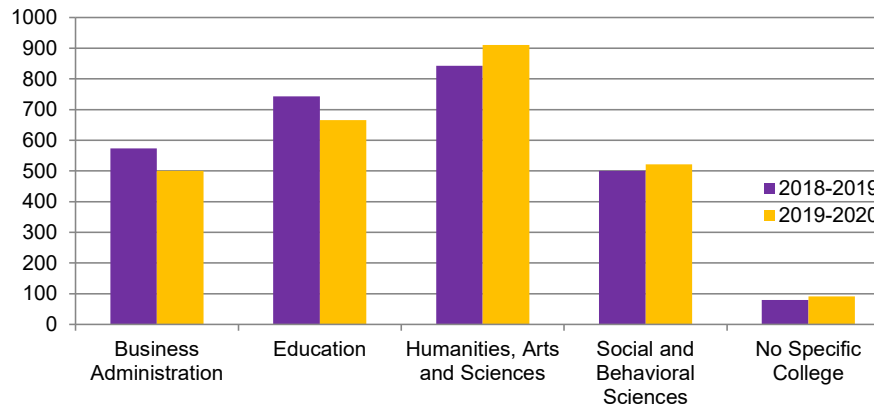
	Undergraduate					Graduate				
	2016	2017	2018	2019	2020	2016	2017	2018	2019	2020
Total University	10,104	10,005	9,561	8,973	8,304	1,801	1,902	1,651	1,524	1,218
Business Administration	1,994	2,009	1,907	1,716	1,627	96	155	174	100	142
Education	2,195	2,224	2,125	2,019	1,821	556	545	499	448	438
Humanities, Arts and Sciences	3,380	3,336	3,093	2,945	2,707	440	411	392	339	324
Social and Behavioral Sciences	1,622	1,623	1,579	1,507	1,503	246	248	256	251	223
No Specific College	913	813	857	786	646	463	543	330	386	91

Annual Degrees Awarded by Level 2010 - 2020

	2009- 2010	2010- 2011	2011- 2012	2012- 2013	2013- 2014	2014- 2015	2015- 2016	2016- 2017	2017- 2018	2018- 2019	2019- 2020	5 Yr % Change	10 Yr % Change
Total Degrees Awarded	2,934	2,725	3,034	2,875	2,897	2,768	2,692	2,579	2,722	2,739	2,690	-2.8	-8.3
Baccalaureate	2,347	2,198	2,440	2,349	2,357	2,303	2,166	2,126	2,184	2,178	2,235	-3.0	-4.8
Master's	561	509	572	483	512	446	503	431	508	534	437	-2.0	-22.1
Specialists	6	5	10	13	8	5	9	8	7	8	7	40.0	16.7
Doctorates	20	13	12	30	20	14	14	14	23	19	11	-21.4	-45.0
Undergraduate Degrees Awarded	2,347	2,198	2,440	2,349	2,357	2,303	2,166	2,126	2,184	2,178	2,235	-3.0	-4.8
Bachelor of Applied Science											2		
Bachelor of Arts	2,201	2,079	2,293	2,227	2,209	2,142	2,025	1,949	1,991	1,998	2,018	-5.8	-8.3
Bachelor of Fine Arts	8	6	11	11	11	8	7	6	7	6	11	37.5	37.5
Bachelor of Music	27	15	22	18	34	25	21	33	25	20	27	8.0	0.0
Bachelor of Science	84	84	98	79	86	91	76	92	96	114	131	44.0	56.0
Bachelor of Liberal Studies	27	14	16	14	17	37	37	46	65	40	46	24.3	70.4
Graduate Degrees Awarded	587	527	594	526	540	465	526	453	538	561	455	-2.2	-22.5
Master of Accounting	29	21	25	20	18	23	13	20	18	20	8	-65.2	-72.4
Master of Arts in Education	147	105	121	104	118	112	104	80	57	91	61	-45.5	-58.5
Master of Arts	243	255	284	235	242	190	285	233	304	240	261	37.4	7.4
Master of Athletic Training											1		
Master of Business Administration	40	31	27	28	36	38	30	18	36	107	32	-15.8	-20.0
Master of Music	24	10	26	11	15	13	17	17	25	13	19	46.2	-20.8
Master of Public Policy	4	10	11	9	11	12	0	0	10	0	9	-25.0	125.0
Master of Science	15	19	21	22	23	26	17	23	17	13	15	-42.3	0.0
Master of Social Work	40	41	40	33	37	32	34	37	38	50	31	-3.1	-22.5
Professional Science Master's	19	17	17	21	12	0	3	3	3	0	0	0.0	-100.0
Specialist in Education	6	5	10	13	8	5	9	8	7	8	7	40.0	16.7
Doctor of Technology/Doctor of Industrial Technology	2	1	1	4	6	2	0	2	1	1	2	0.0	0.0
Doctor of Education	18	12	11	26	14	12	14	12	22	18	9	-25.0	-50.0

Degrees Granted by College 2018 - 2019 and 2019 - 2020

	Baccalaureates				Master's				Specialists				Doctorates			
	2018-2019		2019-2020		2018-2019		2019-2020		2018-2019		2019-2020		2018-2019		2019-2020	
	N	%	N	%	N	%	N	%	N	%	N	%	N	%	N	%
Total Degrees Granted	2,178	100	2,235	100	534	100	437	100	8	100	7	100	19	100	11	100
Business Administration	446	20.5	460	20.6	127	23.8	40	9.2	0	0.0	0	0.0	0	0.0	0	0.0
Education	526	24.1	511	22.8	191	35.8	139	31.8	8	100.0	7	100.0	18	94.7	9	81.8
Humanities, Arts and Sciences	716	32.9	764	34.2	126	23.6	145	33.2	0	0.0	0	0.0	1	5.3	2	18.2
Social and Behavioral Sciences	414	19.0	424	19.0	86	16.1	98	22.4	0	0.0	0	0.0	0	0.0	0	0.0
No Specific College	76	3.5	76	3.4	4	0.7	15	3.4	0	0.0	0	0.0	0	0.0	0	0.0



Degrees Granted by Race/Ethnicity 2018 - 2019 and 2019 - 2020

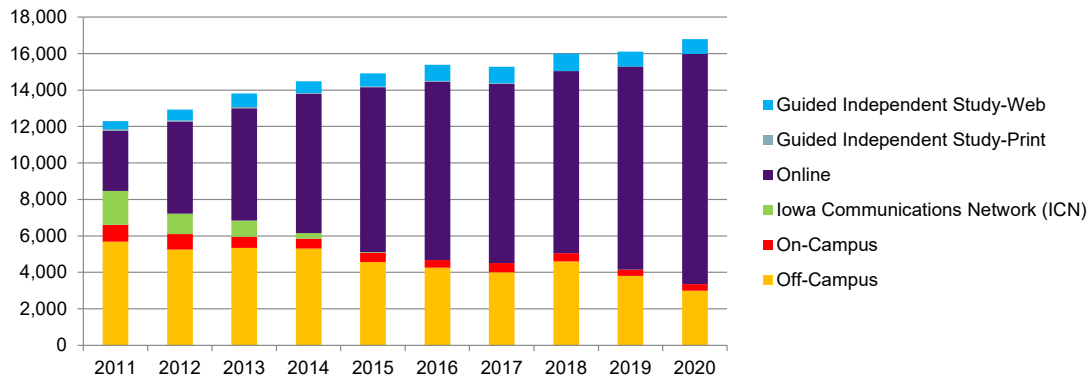
	Baccalaureates				Master's				Specialists				Doctorates			
	2018-2019		2019-2020		2018-2019		2019-2020		2018-2019		2019-2020		2018-2019		2019-2020	
	N	%	N	%	N	%	N	%	N	%	N	%	N	%	N	%
Total Degrees Granted	2,178	100	2,235	100	534	100	437	100	8	100	7	100	19	100	11	100
American Indian/Alaskan Native	3	0.1	5	0.2	1	0.2	0	0.0	0	0.0	0	0.0	0	0.0	0	0.0
Asian	35	1.6	28	1.3	5	0.9	3	0.7	0	0.0	0	0.0	0	0.0	0	0.0
Black/African American	53	2.4	43	1.9	9	1.7	9	2.1	0	0.0	0	0.0	0	0.0	2	18.2
Hispanic	66	3.0	91	4.1	7	1.3	17	3.9	0	0.0	0	0.0	0	0.0	0	0.0
International	81	3.7	72	3.2	106	19.9	43	9.8	0	0.0	0	0.0	7	36.8	3	27.3
Not Available	72	3.3	79	3.5	25	4.7	14	3.2	0	0.0	0	0.0	3	15.8	0	0.0
Native Hawaiian/Pacific Islander	1	0.1	4	0.2	0	0.0	0	0.0	0	0.0	0	0.0	0	0.0	0	0.0
Two or More	30	1.4	48	2.2	4	0.7	3	0.7	0	0.0	0	0.0	0	0.0	0	0.0
White	1,837	84.4	1,865	83.4	377	70.6	348	79.6	8	100.0	7	100.0	9	47.4	6	54.5

Undergraduate Retention and Graduation Rates 2000 - 2019

Admit Year	Total First Time Freshmen	Continuing 2nd Year		Graduating 4th Year		Graduating 6th Year	
		N	%	N	%	N	%
2000	2,218	1,863	84.0	756	34.1	1,492	67.3
2001	2,064	1,681	81.4	672	32.6	1,348	65.3
2002	1,822	1,469	80.6	614	33.7	1,152	63.2
2003	1,740	1,417	81.4	618	35.5	1,160	66.7
2004	1,652	1,337	80.9	584	35.4	1,110	67.2
2005	1,694	1,390	82.1	616	36.4	1,130	66.7
2006	1,684	1,386	82.3	648	38.5	1,117	66.3
2007	1,922	1,608	83.7	708	36.8	1,278	66.5
2008	1,976	1,627	82.3	747	37.8	1,261	63.8
2009	1,917	1,582	82.5	721	37.6	1,296	67.6
2010	1,934	1,586	82.0	759	39.2	1,258	65.0
2011	1,897	1,543	81.3	756	39.9	1,277	67.3
2012	1,678	1,391	82.9	671	40.0	1,096	65.3
2013	1,689	1,430	84.7	731	43.3	1,137	67.3
2014	1,762	1,411	80.1	715	40.6	1,118	63.5
2015	1,874	1,609	85.9	827	44.1		
2016	1,963	1,593	81.2	848	43.2		
2017	1,813	1,515	83.6				
2018	1,653	1,379	83.4				
2019	1,453	1,243	85.5				

Continuing Education Credit Enrollment Trends 2010 - 2020

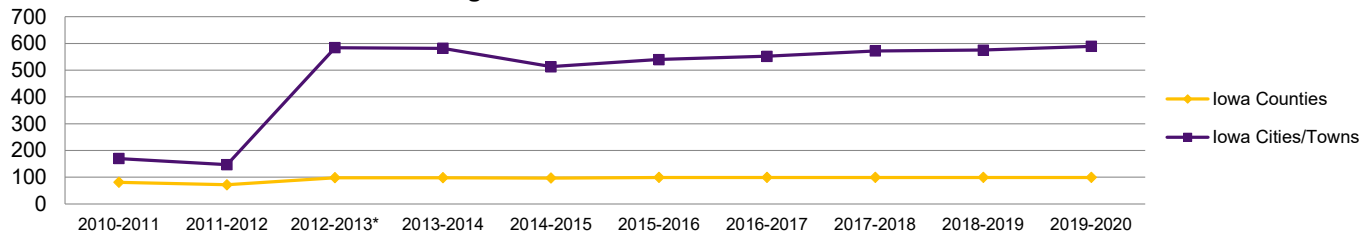
	2010- 2011	2011- 2012	2012- 2013	2013- 2014	2014- 2015	2015- 2016	2016- 2017	2017- 2018	2018- 2019	2019- 2020
Total	12,302	12,924	13,818	14,481	14,906	15,378	15,271	15,987	16,099	16,790
Annual Percent Change	4.7	5.1	6.9	4.8	2.9	3.2	-0.7	4.7	0.7	4.3
Off-Campus	5,690	5,257	5,336	5,313	4,561	4,260	4,014	4,611	3,816	2,992
On-Campus	921	846	616	530	514	416	493	446	329	372
Iowa Communications Network (ICN)	1,856	1,123	898	320	35	0	0	0	0	0
Online	3,289	5,041	6,153	7,627	9,043	9,792	9,836	9,975	11,137	12,620
Guided Independent Study-Print	109	63	67	41	40	28	20	8	10	0
Guided Independent Study-Web	437	594	748	650	713	882	908	947	807	806



Continuing Education Courses Offered 2010 - 2020

	Iowa Counties	Iowa Cities/Towns*	Number of Off-Campus Degree and Certificate Programs
2010-2011	81	170	24
2011-2012	72	147	25
2012-2013*	98	584	27
2013-2014	98	582	32
2014-2015	97	513	37
2015-2016	99	540	44
2016-2017	99	552	42
2017-2018	99	572	40
2018-2019	99	575	40
2019-2020	99	589	40

Continuing Education Course Locations Offered

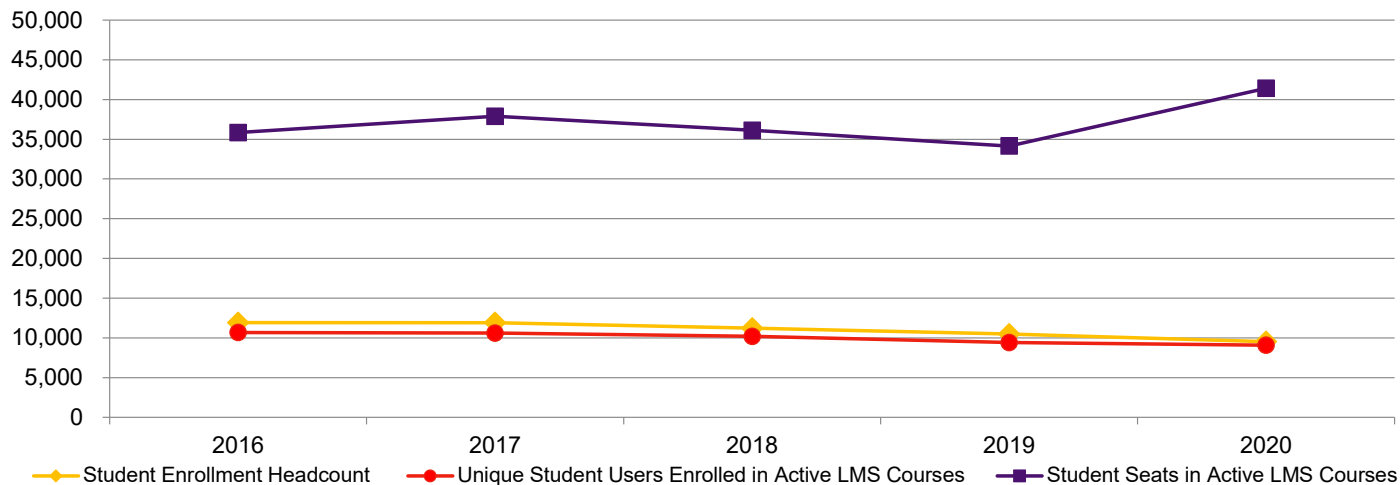


Source: *Continuing Education and Special Programs*

*Effective 2012-2013, Iowa Cities/Towns reflects locations in which students enrolled in courses offered at an off-campus location, an ICN location, in a guided independent study course, or in an online (semester) course. Prior to 2012-2013, locations reflected only students enrolled in off-campus, ICN, or guided independent study courses. Including city/town locations for students enrolled in online courses brings reporting in line with practices at the other Iowa Regent universities.

Web-Based Learning Management System (LMS) 2016 - 2020

	2016	2017	Fall 2018	2019	2020
Student Enrollment Headcount	11,905	11,907	11,212	10,497	9,522
Unique Student Users Enrolled in Active LMS Courses	10,673	10,618	10,207	9,410	9,079
Student Seats in Active LMS Courses	35,838	37,900	36,120	34,142	41,415
Instructors in Active LMS Courses	600	605	610	570	644
Academic Sections Active in LMS	1,589	1,584	1,601	1,494	2,115



Source: IT - Educational Technology & Media Services

Fall Semester Residence Hall Occupancy by Gender and Level 2010 - 2020

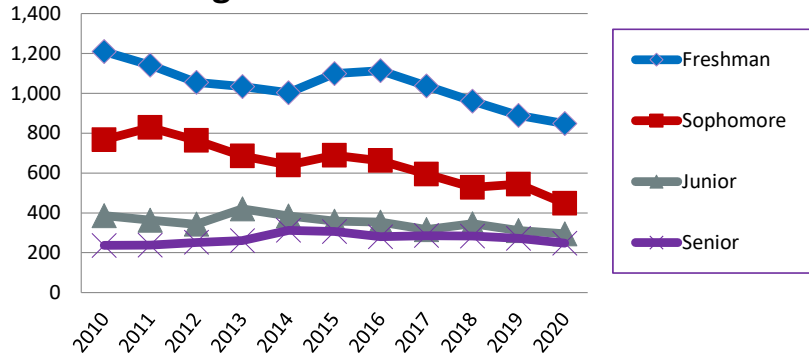
Female

	Freshman	Sophomore	Junior	Senior	Unclassified & Graduates
2010	1,209	767	386	237	101
2011	1,141	828	363	238	78
2012	1,055	763	343	252	84
2013	1,034	685	420	261	88
2014	1,003	640	385	312	109
2015	1,099	689	359	306	151
2016	1,114	662	354	281	139
2017	1,037	594	316	286	51
2018	960	528	345	284	64
2019	889	544	311	272	20
2020	848	447	295	248	43

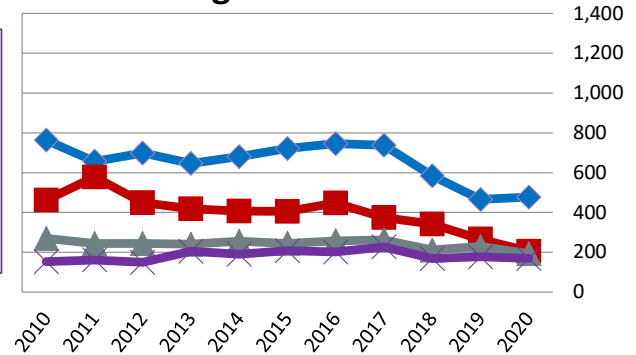
Male

	Freshman	Sophomore	Junior	Senior	Unclassified & Graduates
2010	763	463	270	153	79
2011	657	578	244	162	70
2012	698	450	244	150	84
2013	646	419	241	205	62
2014	681	407	255	190	106
2015	721	406	245	208	153
2016	746	448	258	202	148
2017	737	375	263	227	39
2018	584	342	211	169	71
2019	466	266	229	177	23
2020	477	205	193	169	28

Undergraduates - Female



Undergraduates - Male



Source: Department of Residence



ALUMNI



ALUMNI

Total Living Alumni by College 2016 - 2020

College	2016		2017		2018		2019		2020	
	N	%	N	%	N	%	N	%	N	%
Subtotal Alumni*	119,089		121,173		123,217		125,248		127,221	
TOTAL Living Alumni**	114,716		116,766		118,729		120,686		122,603	
Business Administration	23,624	19.8	24,009	19.8	24,422	19.8	24,906	19.9	25,326	19.9
Education ***	35,305	29.6	35,834	29.6	36,338	29.5	36,752	29.3	37,133	29.2
Humanities, Arts and Sciences	36,555	30.7	37,211	30.3	37,880	30.7	38,464	30.7	39,154	30.8
Social and Behavioral Sciences	19,809	16.6	20,232	16.7	20,611	16.7	21,062	16.8	21,489	16.9
College Unassigned/Interdisciplinary****	3,796	3.2	3,887	3.2	3,966	3.2	4,064	3.2	4,119	3.2

Source: *University Advancement*

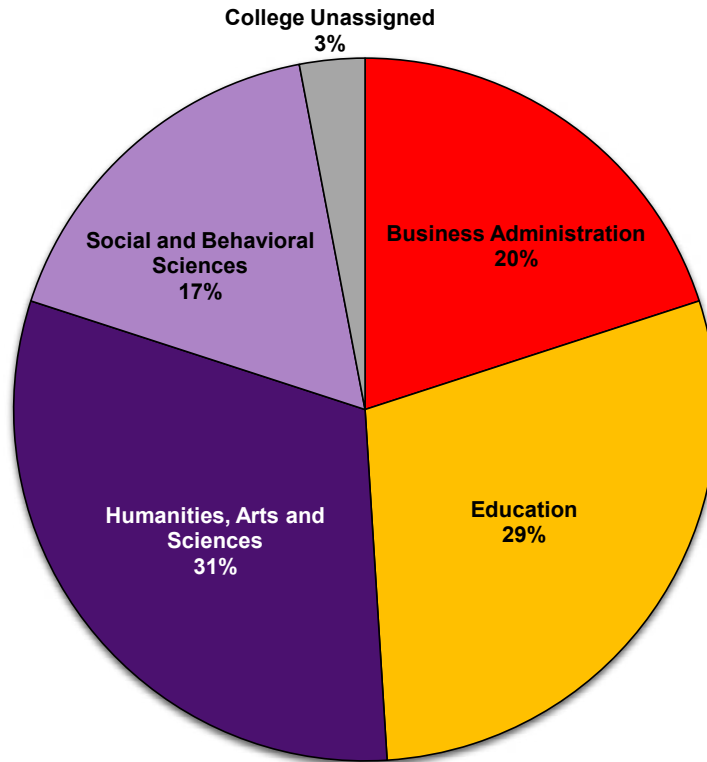
*Alumni having earned degrees in different colleges are counted once in each college; alumni earning multiple degrees in the same college are counted only once for that college

**Grads counted a single time even when earning multiple degree(s)

***Includes 2-Year Teaching Certificates

****Includes Individual Studies, General Studies, Liberal Studies, Interdisciplinary majors; college unassigned

Total Living Alumni by College



Alumni = 122,603

Alumni by State 2020*

State	Alumni	State	Alumni
Alabama	133	Montana	175
Alaska	204	Nebraska	1,807
Arizona	2,247	Nevada	373
Arkansas	320	New Hampshire	77
California	2,452	New Jersey	185
Colorado	2,856	New Mexico	248
Connecticut	133	New York	482
Delaware	39	North Carolina	787
Florida	1,911	North Dakota	116
Georgia	716	Ohio	633
Hawaii	145	Oklahoma	322
Idaho	193	Oregon	569
Illinois	4,019	Pennsylvania	398
Indiana	696	Rhode Island	36
Iowa	77,141	South Carolina	337
Kansas	1,508	South Dakota	595
Kentucky	230	Tennessee	598
Louisiana	145	Texas	3,393
Maine	52	Utah	168
Maryland	317	Vermont	36
Massachusetts	242	Virginia	692
Michigan	652	Washington	841
Minnesota	5,553	West Virginia	30
Mississippi	80	Wisconsin	2,479
Missouri	2,109	Wyoming	127
		District of Columbia	91

Source: *University Advancement*

*As of 9-30-2020 including Summer 2020 grads

Alumni by Iowa County 2020

County	Alumni	County	Alumni	County	Alumni	County	Alumni
Adair	64	Decatur	33	Johnson	2,775	Pocahontas	121
Adams	29	Delaware	548	Jones	429	Polk	13,569
Allamakee	319	Des Moines	407	Keokuk	173	Pottawattamie	648
Appanoose	103	Dickinson	424	Kossuth	412	Poweshiek	471
Audubon	76	Dubuque	2,400	Lee	267	Ringgold	43
Benton	817	Emmet	118	Linn	7,357	Sac	188
Black Hawk	12,628	Fayette	592	Louisa	108	Scott	2,931
Boone	397	Floyd	559	Lucas	64	Shelby	111
Bremer	2,058	Franklin	246	Lyon	48	Sioux	209
Buchanan	1,122	Fremont	32	Madison	281	Story	1,583
Buena Vista	230	Greene	166	Mahaska	255	Tama	674
Butler	896	Grundy	957	Marion	524	Taylor	29
Calhoun	231	Guthrie	184	Marshall	965	Union	92
Carroll	467	Hamilton	363	Mills	94	Van Buren	42
Cass	162	Hancock	237	Mitchell	336	Wapello	355
Cedar	345	Hardin	710	Monona	53	Warren	1,120
Cerro Gordo	1,497	Harrison	91	Monroe	87	Washington	411
Cherokee	159	Henry	253	Montgomery	54	Wayne	39
Chickasaw	512	Howard	286	Muscatine	612	Webster	677
Clarke	67	Humboldt	243	O'Brien	180	Winnebago	325
Clay	334	Ida	96	Osceola	32	Winneshiek	626
Clayton	462	Iowa	312	Page	94	Woodbury	662
Clinton	694	Jackson	358	Palo Alto	226	Worth	197
Crawford	150	Jasper	557	Plymouth	308	Wright	318
Dallas	1,769	Jefferson	135				
Davis	71					TOTAL	77,141

Source: University Advancement 9-30-2020

Post-Graduation Status of 2018 - 2019 and 2019 - 2020 Bachelor's Degree Recipients

College	Graduates	No Information	Total Responding	Employed*	Continuing Education	Undergrad Education
2018 - 19						
Business	437	91	346	306	21	
Education	524	68	456	368	58	
Humanities, Arts and Sciences	713	141	572	420	107	
Social & Behavioral Sciences	418	83	335	243	62	
TOTAL	2,092	383	1,709	1,337	248	0
			(1,709 of 2,092)	(1,337 of 1,709)	(248 of 1,709)	(0 of 1,709)
			81.7%	78.2%	14.5%	0.00%
2019 - 20						
Business	420	53	367	305	34	
Education	481	55	426	373	32	
Humanities, Arts and Sciences	701	115	586	418	107	
Social & Behavioral Sciences	395	81	314	215	65	
TOTAL	1,997	304	1,693	1,311	238	0
			(1,693 of 1,997)	(1,311 of 1,693)	(238 of 1,693)	(0 of 1,693)
			84.8%	77.4%	14.1%	0.00%

Source: Career Services

*Method: Data was collected from one month prior to six months after graduation. Collection included surveys, employer reports and social media updates.

Post-Graduation Status of 2018 - 2019 and 2019 - 2020 Graduate Degree Recipients*

College	Graduates	No Information	Total Responding	Employed**	Continuing Education	Other
2018 - 2019						
Business	19	0	19	15	0	4
Education	83	7	76	56	2	18
Humanities, Arts and Sciences	65	2	63	43	3	17
Social & Behavioral Sciences	40	1	39	31	3	5
Interdisciplinary	4	0	4	2	1	1
TOTAL	211	10	201	147	9	45
			(201 of 211)	(147 of 201)	(9 of 201)	(45 of 201)
			95.3%	73.1%	4.5%	22.4%
2019 - 2020						
Business	2	0	2	1	0	1
Education	19	2	17	11	0	6
Humanities, Arts and Sciences	14	2	12	8	0	4
Social & Behavioral Sciences	16	5	11	10	1	0
Interdisciplinary	0	0	0	0	0	0
TOTAL	51	9	42	30	1	11
			(42 of 51)	(30 of 42)	(1 of 42)	(11 of 42)
			82.4%	71.4%	2.4%	26.2%

*Method: Data was collected through a survey of graduates via students' university e-mails; changed data method from past years

**72.4% of respondents employed in Iowa 2019 - 2020

2019 - 2020 only includes Fall 2019 survey respondents

Undergraduate Plans for Further Education 2019 - 2020

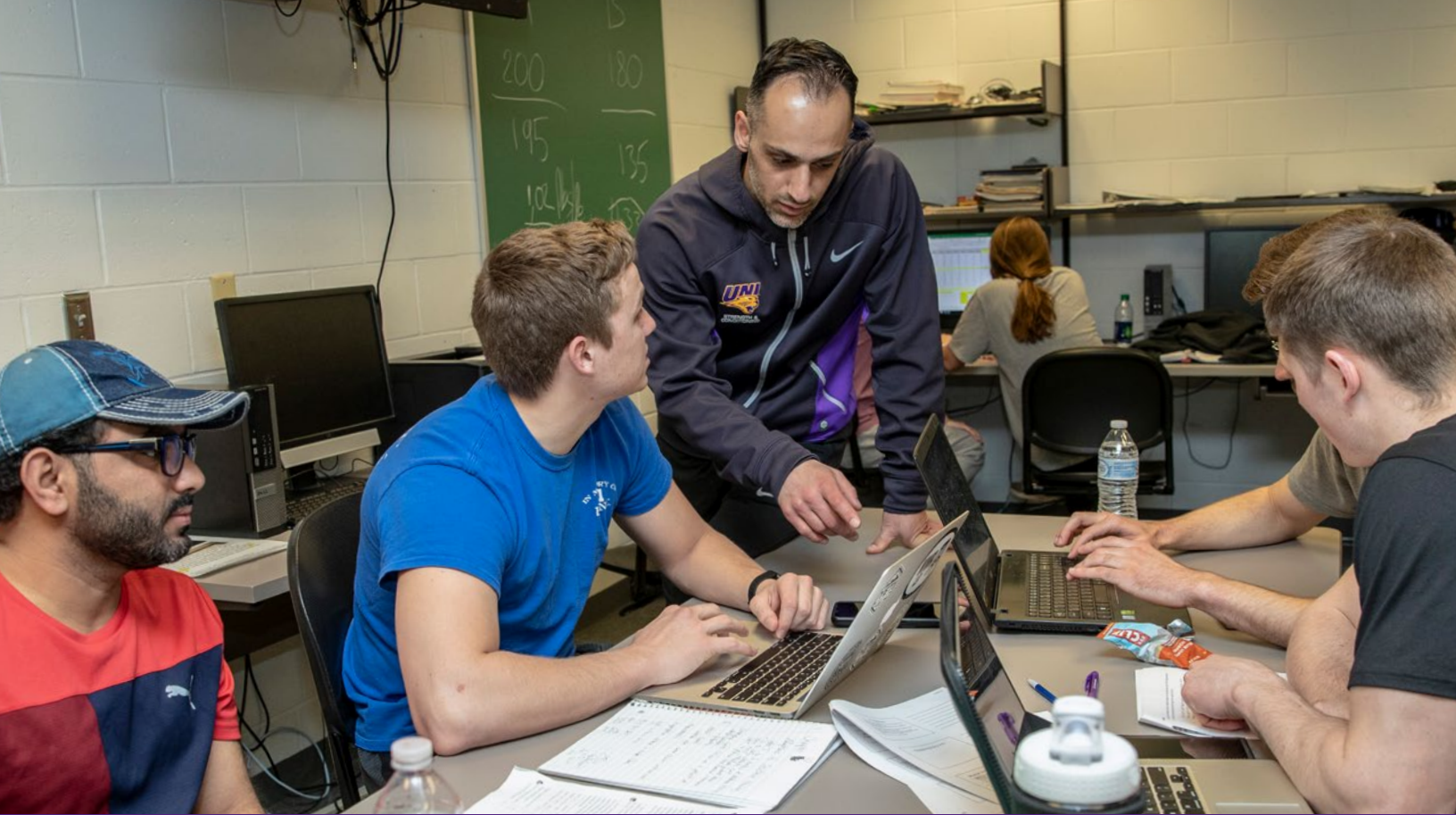
College	Completed Survey		Accepted to a Graduate/Professional Program		Currently Applying to Programs		Accepted to Another Undergraduate Program	
	N	%	N	%	N	%	N	%
TOTAL	57	100	21	100	29	100	7	100
Business Administration	13	22.8%	6	28.6%	2	6.9%	5	71.4%
Education	2	3.5%	1	4.8%	0	0.0%	1	14.3%
Humanities, Arts and Sciences	26	45.6%	13	61.9%	13	44.8%	0	0.0%
Social and Behavioral Sciences	16	28.1%	1	4.8%	14	48.3%	1	14.3%
Interdisciplinary	0	0.0%	0	0.0%	0	0.0%	0	0.0%
			(21 of 57)		(29 of 57)		(7 of 57)	
			36.8%		50.9%		12.3%	

Data collected from December 2019 Graduating Senior Survey

Graduate Plans for Further Education 2019 - 2020

College	Completed Graduate Program Survey		Accepted to a Graduate/Professional Program		Currently Applying to Programs		No Response for Further Education	
	N	%	N	%	N	%	N	%
TOTAL	51	100.0%	0	0.0%	1	2.0%	50	98.0%
Business Administration	2	3.9%	0	-	0	0.0%	2	4.0%
Education	19	37.3%	0	-	0	0.0%	19	38.0%
Humanities, Arts and Sciences	14	27.5%	0	-	0	0.0%	14	28.0%
Social and Behavioral Sciences	16	31.4%	0	-	1	100.0%	15	30.0%
Interdisciplinary	0	0.0%	0	-	0	0.0%	0	0.0%
			(0 of 51)		(1 of 51)		(50 of 51)	
			0.0%		2.0%		98.0%	

Data collected from December 2019 Graduating Senior Survey



FACULTY & STAFF





FACULTY & STAFF

Fall 2020 Faculty Profile by College

	Total University	Business	Education	Humanities, Arts & Sciences	Social & Behavioral Sciences	Continuing Education No Specific	Library
Faculty	641	66	133	293	112	21	16
Full-Time	537	56	116	251	89	10	15
Part-Time	104	10	17	42	23	11	1
Female	334	21	92	137	61	11	12
Male	307	45	41	156	51	10	4
American Indian/Alaskan Native	1	0	1	0	0	0	0
Asian/Pacific Islander	58	16	6	25	10	0	1
Black/African American	19	1	4	10	4	0	0
Hispanic/Latino	20	0	4	12	3	1	0
Native Hawaiian/Other Pacific Islander	1	0	0	1	0	0	0
Race and Ethnicity Unknown	1	0	0	1	0	0	0
Two or more races	4	0	1	3	0	0	0
White	537	49	117	241	95	20	15
Professors	175	16	26	88	36	7	2
Associate Professors	175	15	32	86	31	3	8
Assistant Professors	104	13	27	37	20	2	5
Instructors/Lecturers	187	22	48	82	25	9	1
Tenured	363	30	71	176	66	10	10
Tenure-Track	96	13	24	34	20	0	5
Non Tenure-Track	182	23	38	83	26	11	1

Includes Academic Department Heads and other Administrators with Faculty Rank but excludes Deans and above

Fall 2020 Faculty by College, Legal Sex and Tenure Status

	Full-Time		Part-Time		Total	
	Female	Male	Female	Male	Female	Male
Business	16	40	5	5	21	45
Tenured	7	21	1	1	8	22
Tenure-Track	3	10	0	0	3	10
Non Tenure-Track	6	9	4	4	10	13
Education	78	38	14	3	92	41
Tenured	49	19	3	0	52	19
Tenure-Track	13	11	0	0	13	11
Non Tenure-Track	16	8	11	3	27	11
Humanities, Arts and Sciences	114	137	23	19	137	156
Tenured	67	104	4	1	71	105
Tenure-Track	17	16	1	0	18	16
Non Tenure-Track	30	17	18	18	48	35
Social and Behavioral Sciences	45	44	16	7	61	51
Tenured	27	35	2	2	29	37
Tenure-Track	14	6	0	0	14	6
Non Tenure-Track	4	3	14	5	18	8

Includes Academic Department Heads and other Administrators with Faculty Rank but excludes Deans and above

Continued on next page

Fall 2020 Faculty by College, Legal Sex and Tenure Status (continued)

	Full-Time		Part-Time		Total	
	Female	Male	Female	Male	Female	Male
Cont Ed & Special Prog or No Specific	4	6	7	4	11	10
Tenured	4	6	0	0	4	6
Tenure-Track	0	0	0	0	0	0
Non Tenure-Track	0	0	7	4	7	4
Library	11	4	1	0	12	4
Tenured	7	3	0	0	7	3
Tenure-Track	4	1	0	0	4	1
Non Tenure-Track	0	0	1	0	1	0
All Faculty	268	269	66	38	334	307
Tenured	161	188	10	4	171	192
Tenure-Track	51	44	1	0	52	44
Non Tenure-Track	56	37	55	34	111	71

Includes Academic Department Heads and other Administrators with Faculty Rank but excludes Deans and above

UNI Workforce by Employment Categories 2010 - 2020

Categories	2010	2011	2012	2013	2014	2015	2016	2017	2018	2019	2020	5 Year % Change	10 Year % Change
	N	N	N	N	N	N	N	N	N	N	N		
Total Workforce*	1,842	1,894	1,801	1,819	1,861	1,835	1,816	1,820	1,811	1,736	1,650	-10.1	-10.4
Annual Percent Change	-2.2	2.8	-4.9	1.0	2.3	-1.4	-1.0	0.2	-0.5	-4.1	-5.0		
Executive/Managerial	98	94	95	93	97	95	102	99	103	101	107	12.6	9.2
Faculty - Tenure/Tenure-Track**	546	552	519	525	531	517	488	471	450	431	413	-20.1	-24.4
Faculty - Term/Renewable Term	41	63	37	36	47	51	49	54	56	58	60	17.6	46.3
Professional/Scientific	578	603	592	609	622	638	652	668	685	658	608	-4.7	5.2
Secretarial/Clerical	256	264	254	249	249	230	232	228	222	204	187	-18.7	-27.0
Technical/Paraprofessional	24	22	20	20	21	16	19	18	18	19	19	18.8	-20.8
Skilled Crafts	55	55	56	59	59	57	58	60	54	53	48	-15.8	-12.7
Service/Maintenance	244	241	228	228	235	231	216	222	223	212	208	-10.0	-14.8

Source: Office of Human Resource Services

*Excludes temporary and second appointments

**Excludes some faculty with administrative appointments

UNI Workforce Headcount and FTE by Employment Categories 2016 - 2020

Categories	2016		2017		2018		2019		2020	
	N	FTE	N	FTE	N	FTE	N	FTE	N	FTE
Total Workforce*	1,816	1,720.2	1,820	1,721.5	1,811	1,719.6	1,736	1,667.2	1,650	1,583.6
Annual Percent Change		-3.2		0.1		-0.1		-3.0		-5.0
Executive/Managerial	102	101.3	99	99.0	103	102.9	101	101.0	107	107.0
Faculty -Tenure/Tenure-Track**	488	474.0	471	455.9	450	437.1	431	425.4	413	403.3
Faculty -Term/Renewable	49	48.5	54	53.5	56	56.0	58	58.0	60	60.0
Professional/Scientific	652	599.1	668	616.3	685	633.7	658	614.3	608	572.0
Secretarial/Clerical	232	220.9	228	215.1	222	211.5	204	196.8	187	181.1
Technical/Paraprofessional	19	18.4	18	17.0	18	17.2	19	18.5	19	18.5
Skilled Crafts	58	58.0	60	59.3	54	52.9	53	53.0	48	48.0
Service/Maintenance	216	200.0	222	205.4	223	208.3	212	200.3	208	193.7

Source: Office of Human Resource Services

*Excludes temporary

**Excludes some faculty with administrative appointments

UNI Workforce by Race/Ethnicity 2016 - 2020

Categories	2016		2017		2018		2019		2020	
	N	%	N	%	N	%	N	%	N	%
Total Workforce*	1,816		1,820		1,811		1,736		1,650	
Annual Percent Change		-2.4		0.2		-0.5		-4.1		-5.0
American Indian/Alaskan Native	3	0.2	4	0.2	4	0.2	5	0.3	5	0.3
Asian	62	3.4	69	3.8	79	4.4	80	4.6	76	4.6
Black/African American	83	4.6	81	4.5	91	5.0	78	4.5	72	4.4
Hispanic	35	1.9	38	2.1	39	2.2	46	2.6	48	2.9
White	1,621	89.3	1,612	88.6	1,578	87.1	1,508	86.9	1,433	86.8
Native Hawaiian/Pacific Islander	1	0.1	1	0.1	1	0.1	1	0.1	2	0.1
Two or more	11	0.6	15	0.8	19	1.0	18	1.0	14	0.9
Unknown	0	0.0	0	0.0	0	0.0	0	0.0	0	0.0

Source: Office of Human Resource Services

*Excludes temporary and second appointments

UNI Workforce by Employment Categories and Race/Ethnicity Fall 2020

	American Indian/ Alaskan Native	Asian	Black/ African American	Hispanic	White	Native Hawaiian/ Pacific Islander	Two or More	Total
Total Workforce*	5	76	72	48	1,433	2	14	1,650
Executive/Managerial	1	2	6	2	95	0	1	107
Faculty -Tenure/Tenure-Track**	1	52	13	15	330	1	1	413
Faculty -Term/Renewable Term**	0	2	2	0	54	0	2	60
Professional/Scientific	2	14	27	16	541	0	8	608
Secretarial/Clerical	0	2	7	2	175	0	1	187
Technical/Paraprofessional	0	0	2	1	16	0	0	19
Skilled Crafts	0	0	1	1	46	0	0	48
Service/Maintenance	1	4	14	11	176	1	1	208

Source: Office of Human Resource Services

*Excludes temporary and second appointments

**Excludes some faculty with administrative appointments

UNI Workforce Headcount and FTE by Employment Categories and College Fall 2020

	Total University		Business		Education		Humanities, Arts & Sciences		Social & Behavioral Sciences		No Specific College	
	N	FTE	N	FTE	N	FTE	N	FTE	N	FTE	N	FTE
Total Workforce*	1,650	1,583.6	105	100.9	161	155.5	341	324.6	126	121.6	917	881.1
Executive/Managerial	107	107.0	7	7.0	10	10.0	20	20.0	11	11.0	59	59.0
Faculty -Tenure/Tenure-Track**	413	403.3	38	37.5	86	84.8	196	190.6	76	74.3	17	16.0
Faculty -Term/Renewable	60	60.0	15	15.0	17	17.0	23	23.0	5	5.0	0	0.0
Professional/Scientific	608	572.0	36	32.7	31	27.1	71	61.3	18	16.9	452	433.9
Secretarial/Clerical	187	181.1	8	8.0	17	16.5	25	23.9	16	14.3	121	118.5
Technical/Paraprofessional	19	18.5	1	0.7	0	0.0	5	4.8	0	0.0	13	13.0
Skilled Crafts	48	48.0	0	0.0	0	0.0	0	0.0	0	0.0	48	48.0
Service/Maintenance	208	193.7	0	0.0	0	0.0	1	1.0	0	0.0	207	192.7

Source: Office of Human Resource Services

*Excludes temporary

**Excludes some faculty with administrative appointments

UNI Workforce by Employment Categories, Legal Sex and College Fall 2020

Fall 2020	Total University		Business		Education		Humanities, Arts & Sciences		Social & Behavioral Sciences		No Specific College	
	F	M	F	M	F	M	F	M	F	M	F	M
Total Workforce*	902	748	47	58	118	43	171	170	71	55	495	422
Executive/ Managerial	54	53	4	3	8	2	9	11	5	6	28	31
Faculty - Tenure/ Tenure-Track**	200	213	8	30	58	28	83	113	39	37	12	5
Faculty - Term/ Renewable Term	33	27	6	9	10	7	14	9	3	2	0	0
Professional/ Scientific	339	269	21	15	26	5	40	31	10	8	242	210
Secretarial/ Clerical	178	9	8	0	16	1	25	0	14	2	115	6
Technical/ Paraprofessional	3	16	0	1	0	0	0	5	0	0	3	10
Skilled Crafts	2	46	0	0	0	0	0	0	0	0	2	46
Service/ Maintenance	93	115	0	0	0	0	0	1	0	0	93	114

Source: Office of Human Resource Services

*Excludes temporary and second appointments

**Excludes some faculty with administrative appointments

UNI Workforce by Employment Categories, Level and College Fall 2020

Fall 2020	Total University		Business		Education		Humanities, Arts & Sciences		Social & Behavioral Sciences		No Specific College	
	F-T	P-T	F-T	P-T	F-T	P-T	F-T	P-T	F-T	P-T	F-T	P-T
Total Workforce*	1,551	99	96	9	153	8	310	31	111	15	881	36
Executive/ Managerial	106	1	6	1	10	0	20	0	11	0	59	0
Faculty - Tenure/ Tenure-Track**	393	20	37	1	81	5	187	9	72	4	16	1
Faculty - Term/ Renewable Term**	60	0	15	0	17	0	23	0	5	0	0	0
Professional/ Scientific	556	52	30	6	29	2	54	17	15	3	428	24
Secretarial/ Clerical	169	18	8	0	16	1	21	4	8	8	116	5
Technical/ Paraprofessional	17	2	0	1	0	0	4	1	0	0	13	0
Skilled Crafts	48	0	0	0	0	0	0	0	0	0	48	0
Service/ Maintenance	202	6	0	0	0	0	1	0	0	0	201	6

Source: Office of Human Resource Services

*Excludes temporary and second appointments

**Excludes some faculty with administrative appointments

UNI Workforce by Employment Categories, Level and Legal Sex Fall 2020

Fall 2020	Total University			Female			Male		
	F-T	P-T	Phased	F-T	P-T	Phased	F-T	P-T	Phased
Total Workforce*	1,575	58	17	842	49	11	733	9	6
Executive/Managerial	106	1	0	53	1	0	53	0	0
Faculty -Tenure/Tenure Track**	396	4	13	187	4	9	209	0	4
Faculty -Term/Renewable Term**	60	0	0	33	0	0	27	0	0
Professional/Scientific	566	41	1	306	32	1	260	9	0
Secretarial/Clerical	178	8	1	169	8	1	9	0	0
Technical/Paraprofessional	18	0	1	3	0	0	15	0	1
Skilled Crafts	48	0	0	2	0	0	46	0	0
Service/Maintenance	203	4	1	89	4	0	114	0	1

Source: Office of Human Resource Services

*Excludes temporary and second appointments

**Excludes some faculty with administrative appointments

UNI Temporary Workforce Headcount and FTE by Employment Categories 2016 - 2020

Categories	2016		2017		2018		2019		2020	
	N	FTE	N	FTE	N	FTE	N	FTE	N	FTE
<i>Total Temporary Workforce*</i>	239	133.3	215	116.7	234	127.5	194	102.6	161	84.9
Executive/Managerial	1	0.5	1	0.5	0	0.0	0	0.0	0	0.0
Adjunct Faculty	172	100	172	99.9	179	106.2	152	83.1	125	63.9
Professional/Scientific	40	22.9	19	8.7	18	9.7	16	10.6	18	15.3
Merit Temporary Total (see Breakdown below)	26	9.9	23	7.6	37	11.6	26	9.0	18	5.7
<i>Merit Temporary Workforce (Breakdown)</i>	26	9.9	23	7.6	37	11.6	26	9.0	18	5.7
Secretarial/Clerical	10	4.8	4	1.7	10	4.5	4	2.0	1	0.1
Technical/Paraprofessional	1	0.8	0	0.0	0	0.0	0	0.0	0	0.0
Skilled Crafts	0	0.0	0	0.0	0	0.0	0	0.0	0	0.0
Service/Maintenance	15	4.3	19	5.9	27	7.1	22	7.0	17	5.6

Source: Office of Human Resource Services

*Excludes some faculty with administrative appointments



BUDGET & FINANCE



BUDGET & FINANCE



Statement of Revenues, Expenses and Changes In Net Position 2016 - 2020

	2016	2017	2018	2019	2020
OPERATING REVENUES					
Tuition & Fees	\$91,198,392	\$94,795,754	\$97,290,076	\$94,509,689	\$87,939,829
Less Scholarship Allowance	-27,423,143	-27,887,729	-29,328,890	-28,510,621	-26,362,669
Net Tuition & Fees	\$63,775,249	\$66,908,025	\$67,961,186	\$65,999,068	\$61,577,160
Federal Grants and Contracts	13,990,170	13,493,398	13,480,630	13,308,944	18,067,488
State and Local Grants and Contracts	3,648,716	2,313,573	2,395,237	1,951,083	1,536,350
Nongovernmental Grants and Contracts	4,046,511	4,435,154	4,781,511	4,609,639	4,754,428
Sales and Services of Educational Activities	5,911,251	6,611,381	5,655,563	5,236,235	4,504,409
Interest on Student Loans	213,996	211,196	144,314	83,586	247,504
Other Operating Revenue	662,461	745,911	675,173	1,588,105	1,058,018
Auxiliary Enterprises	61,406,866	62,830,797	60,558,630	65,844,567	52,258,082
Total Operating Revenues	\$153,655,220	\$157,549,435	\$155,652,244	\$158,621,227	\$144,003,439
OPERATING EXPENSES					
Instruction	\$84,062,858	\$84,157,892	\$80,901,677	\$80,498,985	\$78,078,950
Research	2,956,675	2,807,731	2,454,788	2,930,394	2,437,009
Public Service	20,960,763	21,158,018	20,535,785	19,908,014	19,158,773
Academic Support	22,514,076	24,453,665	24,957,576	24,512,568	24,672,884
Student Services	10,034,876	11,500,806	10,106,466	10,235,429	10,377,045
Institutional Support	29,196,905	27,154,337	24,849,345	26,465,594	15,173,659
Operation and Maintenance of Plant	20,132,206	21,447,650	23,527,282	26,533,442	26,231,184
Scholarships and Fellowships	5,863,221	5,860,458	6,143,564	5,683,836	8,232,105
Depreciation	18,121,445	18,534,457	19,112,827	19,400,815	19,463,291
Other Operating Expenses	245,451	185,557	263,616	214,348	286,480
Auxiliary Enterprises	51,264,280	53,724,329	55,824,400	61,223,473	54,409,747
Total Operating Expenses	\$265,352,756	\$270,984,900	\$268,677,326	\$277,606,898	\$258,521,127
Operating (Loss)	(111,697,536)	(113,435,465)	(113,025,082)	(118,985,671)	(114,517,688)

Continued on next page

Statement of Revenues, Expenses and Changes In Net Position 2016 - 2020 (continued)

	2016	2017	2018	2019	2020
NON-OPERATING REVENUES (EXPENSES)					
State Appropriations	\$ 101,757,980	\$ 101,899,530	\$ 101,377,509	\$ 103,414,372	\$ 108,523,295
Federal Grants and Contracts	10,670,342	10,790,666	11,657,278	11,190,012	10,370,865
Nonfederal Gifts, Grants and Contracts	2,536,628	3,269,948	3,956,027	3,857,346	3,127,041
Investment Income	1,333,323	3,089,487	2,619,365	4,852,700	3,090,283
Interest on Indebtedness	(4,392,263)	(5,227,863)	(5,290,179)	(3,075,139)	(2,881,783)
Miscellaneous Revenue/(Expense)	3,487,927	(310,215)	332,620	2,608,145	1,070,005
Net Non-Operating Revenue	\$115,393,937	\$113,511,553	\$114,652,620	\$122,847,436	\$123,299,706
Gain/(Loss) Before Other Revenues	\$ 3,696,401	\$ 76,088	\$ 1,627,538	\$ 3,861,765	\$ 8,782,018
Capital Appropriations	\$19,118,946	\$19,220,339	\$3,660,840	\$3,580,380	\$3,566,940
Capital Gifts, Grants and Contracts	1,278,214	6,285,081	2,570,423	1,891,806	2,269,111
Total Other Revenues	\$20,397,160	\$25,505,420	\$6,231,263	\$5,472,186	\$5,836,051
Change in Net Position	\$ 24,093,561	\$ 25,581,508	\$ 7,858,801	\$ 9,333,951	\$ 14,618,069
NET POSITION					
Total Net Position – July 1 Restated	\$326,780,659	\$350,874,220	\$371,246,326	\$379,105,127	\$388,439,078
Total Net Position – June 30	\$350,874,220	\$376,455,728	\$379,105,127	\$388,439,078	\$403,057,147

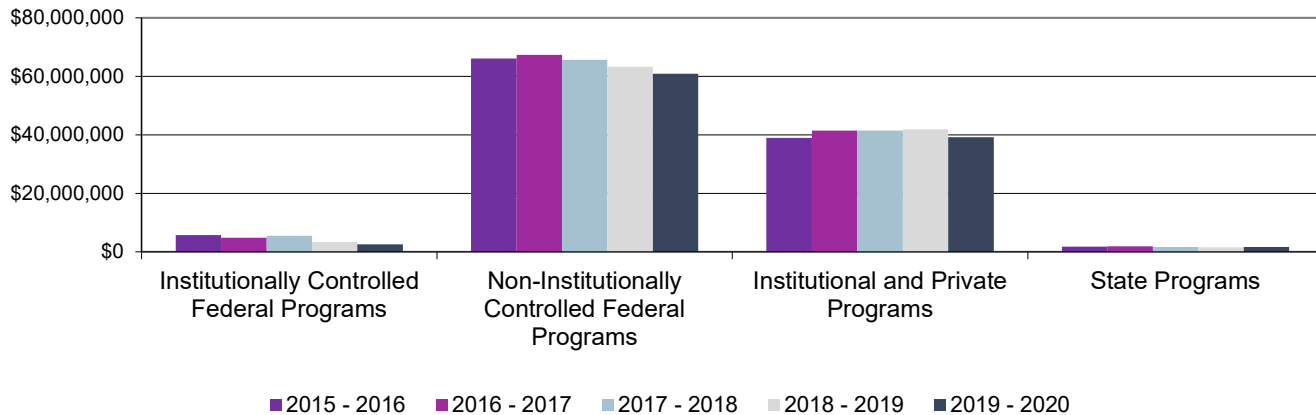
Source: Office of Business Operations

* Fiscal year runs July 1 through June 30

Financial Aid Programs by Source of Aid 2015 - 2016 to 2019 - 2020

	2015 - 2016	2016 - 2017	2017 - 2018	2018 - 2019	2019 - 2020	5 Year % Change
TOTAL	\$112,531,516	\$115,410,950	\$114,140,034	\$110,162,366	\$104,309,611	-7.3%
Institutionally Controlled Federal Programs	\$5,754,578	\$4,767,860	\$5,483,927	\$3,389,793	\$2,603,632	-54.8%
Non-Institutionally Controlled Federal Programs	\$66,080,537	\$67,325,519	\$65,656,073	\$63,299,755	\$60,863,357	-7.9%
Institutional and Private Programs	\$38,984,604	\$41,444,005	\$41,392,880	\$41,947,236	\$39,213,982	0.6%
State Programs	\$1,711,797	\$1,873,566	\$1,607,154	\$1,525,582	\$1,628,640	-4.9%

Source of Financial Aid
2015 through 2020



Source: Financial Aid Office

Student Financial Aid Programs 2017 - 2018 to 2019 - 2020

	2017 - 2018			2018 - 2019			2019-2020		
	Number of Awards	Value of Awards	Mean Award	Number of Awards	Value of Awards	Mean Award	Number of Awards	Value of Awards	Mean Award
TOTAL	38,950	\$114,140,034	\$2,930	37,596	\$110,162,366	\$2,930	40,001	\$104,309,611	\$2,608
Institutional & Private Gift Aid	15,318	\$ 26,140,068	\$1,706	15,853	\$ 26,343,638	\$1,662	15,945	\$ 25,467,065	\$1,597
Institutional Scholarships/Grants	9,592	14,424,147	\$1,504	9,887	14,170,283	\$1,433	10,424	13,316,276	\$1,277
Corporate/Private Scholarships	5,402	7,872,669	\$1,457	5,634	8,230,885	\$1,461	5,180	8,250,228	\$1,593
Athletic Scholarships	324	3,843,252	\$11,862	332	3,942,470	\$11,875	341	3,900,561	\$11,439
Federal & State Grants	5,577	\$ 16,366,544	\$2,935	5,156	\$ 15,632,058	\$3,032	7,589	\$ 17,847,916	\$2,352
Federal Pell Grant	3,136	11,638,627	\$3,711	2,984	11,331,138	\$3,797	2,646	10,231,930	\$3,867
Supplemental Education Opportunity Grant	484	419,687	\$867	540	476,584	\$883	727	545,926	\$751
TEACH Grant	486	1,540,949	\$3,171	461	1,384,781	\$3,004	445	1,297,646	\$2,916
Other Federal Grant/Scholarship Programs	640	1,167,807	\$1,825	583	921,737	\$1,581	3,088	4,154,342	\$1,345
All Iowa Opportunity Scholarship	44	179,306	\$4,075	67	284,388	\$4,245	78	323,413	\$4,146
Iowa Foster Child Grant	0	0	\$0	0	0	\$0	0	0	\$0
Iowa Grant	0	0	\$0	0	0	\$0	0	0	\$0
National Guard	80	464,447	\$5,806	74	460,925	\$6,229	78	474,023	\$6,077
Vocational Rehabilitation	120	342,649	\$2,855	112	376,976	\$3,366	120	411,411	\$3,428
Commission for the Blind	3	21,910	\$7,303	5	31,760	\$6,352	4	24,220	\$6,055
Gear Up	125	240,050	\$1,920	0	0	\$0	2	1,800	\$900
Other State Grants	459	351,112	\$765	330	363,769	\$1,102	401	383,205	\$956
Loans	13,979	\$ 60,407,892	\$4,321	12,679	\$ 57,663,942	\$4,548	11,292	\$ 52,483,470	\$4,648
Federal Perkins	923	1,807,863	\$1,959	0	0	\$0	0	0	\$0
Direct Loans	12,335	53,807,289	\$4,362	11,814	51,858,044	\$4,390	10,469	46,682,915	\$4,459
Alternative Loans	721	4,792,740	\$6,647	865	5,805,898	\$6,712	823	5,800,555	\$7,048
Employment	4,076	\$ 11,225,530	\$2,754	3,908	\$ 10,522,728	\$2,693	5,175	\$ 8,511,160	\$1,645
Federal Work Study	451	701,991	\$1,557	469	654,036	\$1,395	401	502,279	\$1,253
Graduate Teaching, Research Assistantships	299	2,247,999	\$7,518	284	2,185,606	\$7,696	271	2,009,207	\$7,414
UNI Employment	3,326	8,275,540	\$2,488	3,155	7,683,086	\$2,435	4,503	5,999,674	\$1,332

Source: Financial Aid Office

Full-Time Undergraduate Student Tuition and Fees 2000 - 2001 to 2020 - 2021

Academic Year	Academic Services	Activity	Athletics	Computing/Technology	Facilities	General Student Services	Health Services	Health Facility	Surcharge	Total Mandatory Fees	UG Tuition	Total Tuition & Mandatory Fees
2000-01				\$122			\$102			\$224	\$2,906	\$3,130
2001-02		\$92		\$126			\$106			\$324	\$3,116	\$3,440
2002-03		\$174		\$140			\$112			\$426	\$3,692	\$4,118
2003-04				\$150	\$180	\$102	\$116	\$26		\$574	\$4,342	\$4,916
2004-05				\$165	\$180	\$190	\$124	\$26		\$685	\$4,702	\$5,387
2005-06				\$116	\$198	\$222	\$144	\$32		\$712	\$4,890	\$5,602
2006-07				\$178	\$232	\$231	\$152	\$33	\$200	\$1,026	\$5,086	\$6,112
2007-08				\$187	\$237	\$223	\$158	\$33		\$838	\$5,352	\$6,190
2008-09				\$193	\$237	\$227	\$162	\$33		\$852	\$5,524	\$6,376
2009-10		\$35		\$200	\$235	\$215	\$166	\$29	\$100	\$980	\$5,756	\$6,736
2010-11		\$45		\$212	\$235	\$213	\$172	\$29		\$906	\$6,102	\$7,008
2011-12		\$60		\$229	\$235	\$213	\$176	\$29		\$942	\$6,408	\$7,350
2012-13		\$65		\$252	\$235	\$217	\$189	\$29		\$987	\$6,648	\$7,635
2013-14		\$67		\$258	\$220	\$258	\$203	\$31		\$1,037	\$6,648	\$7,685
2014-15		\$68		\$270	\$224	\$295	\$213	\$31		\$1,101	\$6,648	\$7,749
2015-16		\$71		\$290	\$229	\$320	\$228	\$31		\$1,169	\$6,648	\$7,817
2016-17		\$114		\$300	\$261	\$225	\$236	\$31		\$1,211	\$7,098	\$8,309
2017-18		\$120		\$304	\$232	\$230	\$250	\$30		\$1,243	\$7,456	\$8,699
2018-19		\$122		\$300	\$242	\$230	\$258	\$31		\$1,273	\$7,666	\$8,939
2019-20		\$122		\$300	\$242	\$230	\$258	\$31		\$1,273	\$7,666	\$8,939
2020-21		\$122		\$300	\$242	\$230	\$258	\$31		\$1,273	\$7,666	\$8,939

Source: <https://tuition.uni.edu/2020-2021-undergraduate-tuition-fees-overview>

All Non-College of Business Administration Resident students

Full-Time Graduate Student Tuition and Fees 2000 - 2001 to 2020 - 2021

Academic Year	Academic Services	Activity	Athletics	Computing/Technology	Facilities	General Student Services	Health Services	Health Facility	Surcharge	Total Mandatory Fees	Grad Tuition	Total Tuition & Mandatory Fees
2000-01				\$122			\$102			\$224	\$3,452	\$3,676
2001-02		\$92		\$126			\$106			\$324	\$3,702	\$4,026
2002-03		\$174		\$140			\$112			\$426	\$4,388	\$4,814
2003-04				\$150	\$180	\$102	\$116	\$26		\$574	\$5,038	\$5,612
2004-05				\$165	\$180	\$190	\$124	\$26		\$685	\$5,488	\$6,173
2005-06				\$116	\$198	\$222	\$144	\$32		\$712	\$5,708	\$6,420
2006-07				\$178	\$232	\$231	\$152	\$33	\$200	\$1,026	\$5,936	\$6,962
2007-08				\$187	\$237	\$223	\$158	\$33		\$838	\$6,246	\$7,084
2008-09				\$193	\$237	\$227	\$162	\$33		\$852	\$6,446	\$7,298
2009-10		\$35		\$200	\$235	\$215	\$166	\$29	\$100	\$980	\$6,716	\$7,696
2010-11		\$45		\$212	\$235	\$213	\$172	\$29		\$906	\$7,120	\$8,026
2011-12		\$60		\$229	\$235	\$213	\$176	\$29		\$942	\$7,476	\$8,418
2012-13		\$65		\$252	\$235	\$217	\$189	\$29		\$987	\$7,756	\$8,743
2013-14		\$67		\$258	\$220	\$258	\$203	\$31		\$1,037	\$7,756	\$8,793
2014-15		\$68		\$270	\$224	\$295	\$213	\$31		\$1,101	\$7,912	\$9,013
2015-16		\$71		\$290	\$229	\$320	\$228	\$31		\$1,169	\$8,050	\$9,219
2016-17		\$114		\$300	\$230	\$225	\$236	\$31		\$1,211	\$8,592	\$9,803
2017-18		\$120		\$304	\$232	\$230	\$250	\$30		\$1,243	\$8,950	\$10,193
2018-19		\$122		\$300	\$242	\$230	\$258	\$31		\$1,273	\$9,159	\$10,432
2019-20		\$122		\$300	\$242	\$230	\$258	\$31		\$1,273	\$9,159	\$10,432
2020-21		\$122		\$300	\$242	\$230	\$258	\$31		\$1,273	\$9,159	\$10,432

Source: <https://tuition.uni.edu/2020-2021-graduate-tuition-fees-overview>

Resident students

Sponsored Project Proposals and Awards 2009 - 2010 to 2019 - 2020

Fiscal Year	Proposals (P)		Awards (A)	
	N	Amount (\$)	N	Amount (\$)
2009 - 2010	365	53,717,963	254	39,754,021
2010 - 2011	353	56,922,612	250	42,018,391
2011 - 2012	227	42,435,603	185	38,326,824
2012 - 2013*	220	46,942,575	156	41,181,950
2013 - 2014	192	40,216,946	145	40,830,739
2014 - 2015	190	39,917,144	143	38,862,509
2015 - 2016	209	41,799,143	97	39,067,751
2016 - 2017	236	40,997,126	203	37,767,444
2017 - 2018	236	45,623,285	186	39,476,790
2018 - 2019	249	51,927,378	190	40,865,042
2019 - 2020	257	75,775,052	163	46,874,887

Highlights from the 2020 fiscal year:

58 new project applications in FY20.

\$13.0 million in sponsored funding was directed at outreach projects that impacted people, communities and environments throughout Iowa.

\$13 million in sponsored funding supported student services and strengthening academic support programming at UNI.

\$3.2 million in foundation supported research.

\$3.0 million in funding for research.

Source: Office of Research and Sponsored Programs and UNI Foundation

*Starting 2012-2013 award, amount includes UNI Foundation awards.



GENERAL INFORMATION





GENERAL INFORMATION

Library Statistics 2015 - 2020

	2015	2016	2017	2018	2019	2020
PERSONNEL – FTE						
Library Faculty	17	15	16	16	16	17
Library Associates	12	11	12	11	12	11
Library Staff	19	17	20	20	20	20
Student Employees (FTE)*	17	16	16	16	15	12
Student Employees (Headcount)*	85	72	85	79	81	78
HOLDINGS/ACCESS						
Books	780,940	783,450	786,247	759,520	851,097	849,096
Periodicals	166,675	165,643	163,953	97,435	160,237	158,847
Electronic Books	211,207	372,113	463,214	386,190	517,957	407,726
Electronic Journals	63,618	77,173	94,074	93,453	104,938	89,939
Maps (sheets and folded)	40,966	40,971	41,015	39,350	38,756	38,782
Maps (electronic)	2,840	2,895	2,904	3,256	3,600	3,583
Government Documents (all)						
Paper	172,467	157,311	155,325	74,943	72,681	72,809
Microform	300,719	300,635	300,632	59,139	71,893	71,812
CD/DVD/Floppy	500	481	481	387	386	379
Subscriptions						
Periodicals (paper - with newspapers)	813	484	693	532	408	412
Periodicals (electronic - with newspapers)	1,285	981	630	786	782	683
Databases	185	189	212	216	218	118
Audiovisuals						
Sound Recordings	19,998	20,120	20,289	15,235	15,496	14,758
Films and Videotapes	8,593	8,767	8,739	9,406	9,997	10,519
Other Nonprint Materials	3,267	3,283	3,201	5,058	4,166	4,251

Continued on next page

Library Statistics 2015 - 2020 (continued)

	2015	2016	2017	2018	2019	2020
HOLDINGS/ACCESS (continued)						
Microform Units (not government documents)						
Microfilm	30,141	30,293	30,316	28,661	28,723	30,398
Microfiche**	774,907	774,906	774,663	59,656	75,209	2,338
Microcards	17,076	17,076	17,076	4,598	4,598	4,598
Archives & Manuscripts (linear feet)	5,994	6,397	4,964	5,485	4,975	5,469
SERVICES						
Building Entrance Count	490,323	542,616	546,002	501,762	554,031	394,165
Circulation (first time loans)	85,421	67,381	55,091	73,802	76,816	49,258
Reference Transactions (all)	6,677	10,718	11,110	6,387	8,079	9,276
Interlibrary Loan						
Borrowed	4,352	4,042	3,020	3,212	3,124	2,878
Loaned	5,111	4,103	4,377	4,210	3,815	4,013
Library Instruction						
Classes	458	660	686	612	448	323
Persons Served	7,851	10,739	12,305	11,819	9,720	7,906
Document Delivery						
On Campus	3	3	68	***	***	***
Off Campus	307	2,461	1,069	1,024	1,035	1,253

Source: *The Rod Library*

*Stats from Museum and IRTS have been added since 2014 and 2017 respectively.

**Starting in 2020, statistic captured based on updated search capability

***Statistics captured with no distinction between on campus and off campus

International Students by Country Fall 2020

Country	N	Country	N	Country	N
Afghanistan	2	Greece	1	Oman	10
Armenia	1	Honduras	3	Pakistan	10
Austria	1	Hong Kong	12	Peru	1
Bahamas	1	India	14	Philippines	1
Bangladesh	2	Indonesia	1	Qatar	1
Belgium	2	Iran	2	Russia	3
Brazil	4	Ireland	1	Rwanda	1
Burkina Faso	1	Italy	1	Saint Lucia	1
Canada	4	Jamaica	1	Saudi Arabia	37
Chad	1	Japan	1	South Korea	3
Chile	1	Jordan	1	Swaziland	1
China	154	Kazakhstan	1	Sweden	1
Colombia	6	Kenya	4	Taiwan	2
Congo, The Democratic Republic	2	Kosovo	2	Tanzania, United Republic of	1
Costa Rica	2	Kuwait	1	Thailand	2
Cote D'Ivoire	1	Lebanon	1	Trinidad and Tobago	2
Egypt	1	Macao	1	Turkey	3
England	1	Malaysia	10	United Kingdom	3
Ethiopia	2	Mexico	7	Venezuela	1
France	1	Nepal	1	Viet Nam	3
Georgia	1	New Zealand	1	Zambia	1
Ghana	1	Nigeria	3		
				Total	350
				Number of Countries	65

Includes undergraduates and graduates

International Students by College 2015 - 2020

College	2015	2016	2017	2018	2019	2020	1 Yr % Change	5 Yr % Change
TOTAL	616	548	547	480	385	350		
Annual Percent Change	-1.6	-11.0	-0.2	-12.2	-19.8	-9.1	-9.1	-43.2
Business Administration	223	212	241	240	164	181	10.4	-18.8
Education	62	67	61	54	40	22	-45.0	-64.5
Humanities, Arts and Sciences	184	177	152	107	100	91	-9.0	-50.5
Social and Behavioral Sciences	43	48	43	36	33	24	-27.3	-44.2
No Specific College	104	44	50	43	48	32	-33.3	-69.2

Includes undergraduates and graduates

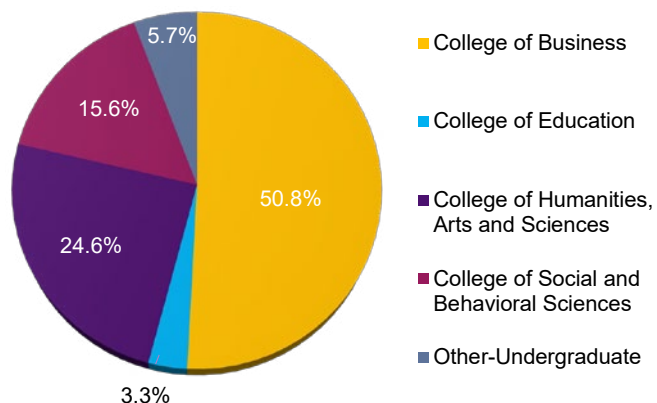
Top 5 Countries of Origin for International Students 2010 - 2020

Fall	Country	N	Country	N	Country	N	Country	N	Country	N	Total International Students
2010	Saudi Arabia	146	China	100	India	27	Russia	23	South Korea	16	480
2011	Saudi Arabia	180	China	89	Russia	24	India	21	Hong Kong	18	488
2012	Saudi Arabia	163	China	88	India	21	Russia	16	Hong Kong	15	454
2013	Saudi Arabia	183	China	127	Hong Kong	19	India	19	Japan	14	520
2014	Saudi Arabia	197	China	138	Brazil	63	India	22	Hong Kong Japan	16 16	626
2015	Saudi Arabia	211	China	144	Brazil	38	India	25	Malaysia	15	616
2016	Saudi Arabia	163	China	116	India	30	Hong Kong	21	Canada	18	548
2017	Saudi Arabia	135	China	135	India	30	Hong Kong	26	Pakistan	23	547
2018	China	176	Saudi Arabia	95	India	28	Pakistan	19	Japan	16	480
2019	China	140	Saudi Arabia	67	India	22	Oman	13	Canada	10	385
2020	China	154	Saudi Arabia	37	India	14	Hong Kong	12	Malaysia	10	350

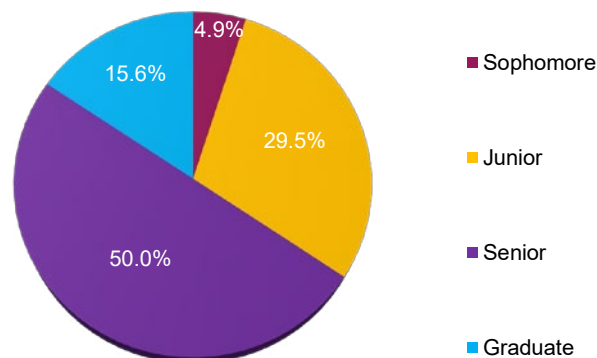
Study Abroad Students by College & Classification Fall 2019/Spring 2020/Summer 2020*

College	N	Classification	N
College of Business	62	Freshman	0
College of Education	4	Sophomore	6
College of Humanities, Arts and Sciences	30	Junior	36
College of Social and Behavioral Sciences	19	Senior	61
Other-Undergraduate	7	Graduate	19
Total	122	Total	122

Students by College



Students by Classification



Source: Study Abroad Center

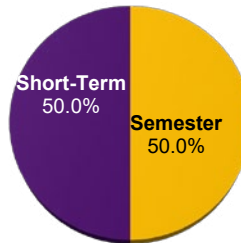
Includes undergraduates and graduates

Does not consider Camp Adventure, International Student Teaching, Athletics, nor School of Music

Study Abroad Students by Term Fall 2019/Spring 2020/Summer 2020*

Type of Program	Academic Year	Fall 2019	Spring 2020	Summer 2020	Total
Semester	2	30	29	--	61
Short-Term	--	--	42	19	61
Total					122

Students by Type of Program



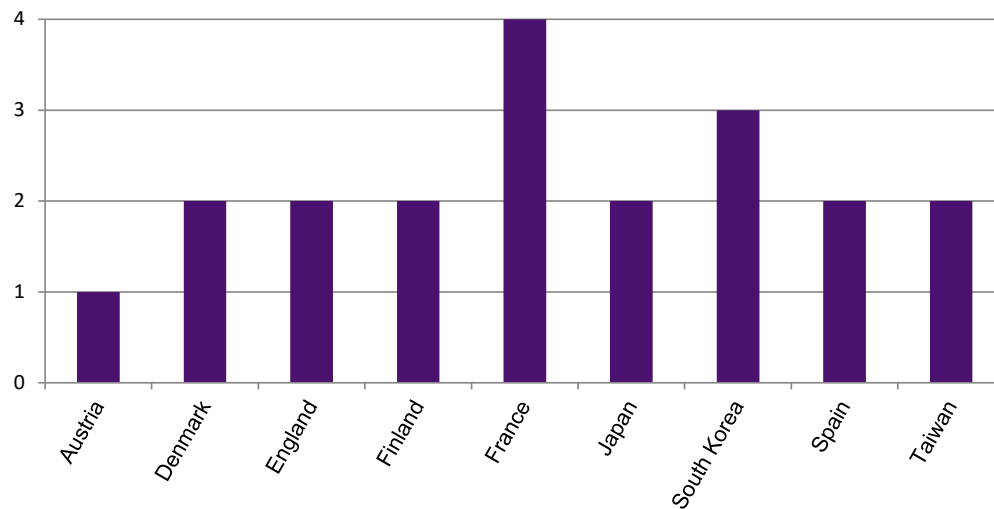
Source: *Study Abroad Center*

Includes undergraduates and graduates

Does not consider Camp Adventure, International Student Teaching, Athletics, nor School of Music

Incoming International Exchange Students by Country Fall 2019/Spring 2020

Country	N
Austria	1
Denmark	2
England	2
Finland	2
France	4
Japan	2
South Korea	3
Spain	2
Taiwan	2



Total 20

Number of Countries 9

Source: *Study Abroad Center*

Includes undergraduates and graduates

Does not consider Camp Adventure, International Student Teaching, Athletics, nor School of Music

Top 5 Countries for UNI Study Abroad Students AY 2010 - 2020

AY	Country	Top 1	Country	Top 2	Country	Top 3	Country	Top 4	Country	Top 5
2010-2011	Germany	302	Japan	145	Italy	119	England	112	Ireland	72
2011-2012	Germany	255	Japan	147	England	106	Italy	98	Ireland	63
2012-2013	Germany	235	Japan	140	England	131	Italy	98	France	75
2013-2014	England	155	Ireland	109	Italy	69	France	67	Greece	50
2014-2015	England	104	Ireland	77	Italy	58	Greece	40	France	32
2015-2016	Italy	71	Ireland	41	Spain	31	Greece	28	New Zealand	23
2016-2017	Italy	64	Ireland	44	Spain	39	Brazil	38	Greece	28
2017-2018	Italy	68	England	60	Spain	46	Greece	35	Ireland	26
2018-2019	Ireland	68	Spain	65	United Kingdom	52	Greece	50	Italy	49
2019-2020	Spain	25	Costa Rica	23	France	23	Greece	9	South Korea	7

Source: Study Abroad Center

Includes undergraduates and graduates

For multiple destinations in one program, total count was included for all countries

Does not consider Camp Adventure, International Student Teaching, Athletics, nor School of Music

UNI Services to Businesses, Communities and Local Government

Divisions	Location	Telephone	Website
Advance Iowa	Cedar Falls, IA	319-273-4322	https://advanceiowa.com
Business & Community Services	Cedar Falls, IA	319-273-6069	https://bcs.uni.edu
Center for Business Growth and Innovation	Cedar Falls, IA	319-273-4344	https://cbgi.uni.edu
Center for Energy and Environmental Education	Cedar Falls, IA	319-273-2573	https://ceee.uni.edu
Geoinformatics Training, Research, Education and Extension	Cedar Falls, IA	319-273-3877	https://www.geotree.uni.edu/en/
Heartland Economic Development Course	Cedar Falls, IA	319-273-6944	https://bcs.uni.edu/heartland
Institute for Decision Making	Cedar Falls, IA	319-273-6941	https://idm.uni.edu
Iowa Waste Reduction Center	Cedar Falls, IA	319-273-8905	https://iwrc.uni.edu
John Pappajohn Entrepreneurial Center	Cedar Falls, IA	319-273-5732	https://jpec.uni.edu
Materials Innovation Service	Cedar Falls, IA	319-273-3689	https://rrttc.com/materials-innovation-service
Recycling and Reuse Technology Transfer	Cedar Falls, IA	319-273-3689	https://rrttc.com
Regional Entrepreneurship Project	Cedar Falls, IA	319-273-6944	https://bcs.uni.edu/eda
Small Business Development Center	Cedar Falls, IA	319-273-4328	https://cbgi.uni.edu/sbdc
Strategic Marketing Services	Cedar Falls, IA	319-273-2886	https://sms.uni.edu
Tallgrass Prairie Center	Cedar Falls, IA	319-273-3836	https://tallgrassprairiecenter.org
UNI Metal Casting Center	Cedar Falls, IA	319-273-6894	https://mcc.uni.edu

Source: *UNI Business and Community Services*

UNI Carnegie Classification

Classification:	Category:
Basic	M1: Master's Colleges & Universities: Larger Programs
Size and Setting	Four-year, large, highly residential
Enrollment Profile	Very high undergraduate
Undergraduate Profile	Four-year, full-time, selective, higher transfer-in
Undergraduate Instructional Program	Professions plus arts & sciences, some graduate coexistence
Graduate Instructional Program	Postbaccalaureate: Comprehensive programs
This institution participated in the following elective classification:	
Community Engagement	Curricular Engagement and Outreach and Partnerships
Level	4-year or above
Control	Public
Enrollment (Fall 2020)	9,522

Source: *The Carnegie Classification of Institutions of Higher Education* - classification based on data from 2016 - 2017

Notes:

Graduate program classification: based on fewer than 50 degrees.

Undergraduate program classification: percentage is within 5 points of a category border (arts & sciences direction).

Apparent inconsistencies between basic and instructional program classifications are due to degree thresholds used in the basic classification.

Iowa Economic Impact Profile

Item	Details
Discretionary Spending and Tourism	9,522 current students
Provide Higher Ed	<p>Approximately 89% of students are from Iowa</p> <p>Credit courses were offered in 99 counties and 575 cities and towns</p> <p>40 off-campus degree and certification programs were offered</p> <p>16,790 enrollment in Continuing and Distance Education Credit courses.</p> <p>20,437 non-credit educational activities</p>
Business Services and Community Impact	<p>Total number community service hours engaged in by UNI students is 625,225 (2019-2020)</p> <p>UNI provided service in all 99 counties to nearly 3,362 unique business, community and local government clients; another 63,400 individuals were engaged in the MyEntre.Net/ IA SourceLink entrepreneurial support system. BCS has reached more than 351,000 Iowans through BCS programs and projects.</p> <p>Leveraged each \$1 invested by the state with \$5 in private grants, fees, and federal funding</p>

Source: Business & Community Services, Community Engagement, Continuing Education, and Office of the President



PEER INSTITUTIONS



PEER INSTITUTIONS

Undergraduate Enrollment and Costs 2018 - 2019

Institution	Location	Student to		In State Tuition & Fees	Out of State Tuition & Fees
		UG	Faculty Ratio		
College of Charleston	Charleston, SC	9,880	15:1	\$25,004	\$44,186
Eastern Illinois University	Charleston, IL	6,012	13:1	\$21,685	\$23,905
Ferris State University	Big Rapids, MI	11,896	16:1	\$21,682	\$21,682
James Madison University	Harrisburg, VA	19,923	16:1	\$22,528	\$38,928
Marshall University	Huntington, WV	9,593	18:1	\$18,582	\$29,068
Southern Illinois University - Edwardsville	Edwardsville, IL	10,833	17:1	\$21,893	\$21,893
Truman State University	Kirksville, MO	5,504	17:1	\$16,529	\$23,381
University of Massachusetts - Dartmouth	North Dartmouth, MA	6,841	16:1	\$27,503	\$42,723
University of Minnesota - Duluth	Duluth, MN	9,961	18:1	\$21,126	\$26,244
University of Northern Iowa	Cedar Falls, IA	9,536	18:1	\$17,886	\$28,428
Western Washington University	Bellingham, WA	15,170	18:1	\$19,592	\$35,006

Source: *Integrated Postsecondary Education Data System (IPEDS)*

UG - Fall 2018 undergraduate enrollment

The cost refers to the total dollar amount of living on campus thus including room and board for 2018 - 2019.

Faculty by Rank 2018 - 2019

Institution	Location	Professor	Associate Professor	Assistant Professor
College of Charleston	Charleston, SC	147	180	147
Eastern Illinois University	Charleston, IL	138	95	36
Ferris State University	Big Rapids, MI	157	131	127
James Madison University	Harrisburg, VA	348	292	261
Marshall University	Huntington, WV	187	120	172
Southern Illinois University - Edwardsville	Edwardsville, IL	157	187	137
Truman State University	Kirksville, MO	143	32	98
University of Massachusetts - Dartmouth	North Dartmouth, MA	121	100	82
University of Minnesota - Duluth	Duluth, MN	91	150	165
University of Northern Iowa	Cedar Falls, IA	133	155	111
Western Washington University	Bellingham, WA	215	164	148

Source: *Integrated Postsecondary Education Data System (IPEDS)*

2018 - 2019 Academic year full-time faculty on both 9/10 month and 11/12 month contract lengths

Faculty Average Salaries by Rank 2018 - 2019

Institution	Location	Professor	Associate Professor	Assistant Professor	Instructor	All Ranks
College of Charleston	Charleston, SC	\$94,898	\$75,194	\$68,436	\$56,559	\$76,664
Eastern Illinois University	Charleston, IL	\$97,898	\$76,273	\$80,440	\$51,933	\$77,344
Ferris State University	Big Rapids, MI	\$110,907	\$84,951	\$78,407	\$61,686	\$82,233
James Madison University	Harrisburg, VA	\$100,086	\$79,213	\$71,937	\$60,934	\$81,513
Marshall University	Huntington, WV	\$86,689	\$71,466	\$70,192	\$41,430	\$72,087
Southern Illinois University - Edwardsville	Edwardsville, IL	\$95,645	\$85,810	\$71,950	\$45,314	\$76,447
Truman State University	Kirksville, MO	\$76,853	\$66,714	\$55,695	\$46,945	\$66,104
University of Massachusetts - Dartmouth	North Dartmouth, MA	\$125,789	\$99,876	\$90,598	-	\$97,860
University of Minnesota - Duluth	Duluth, MN	\$103,947	\$81,031	\$66,863	\$54,220	\$75,920
University of Northern Iowa	Cedar Falls, IA	\$91,329	\$74,779	\$66,704	\$48,070	\$71,992
Western Washington University	Bellingham, WA	\$113,408	\$89,210	\$76,344	\$41,484	\$86,007

Source: *Integrated Postsecondary Education Data System (IPEDS)*
 2018 - 2019 Academic year full-time faculty

Undergraduates Receiving Student Financial Aid 2018- 2019

Institution	Location	Federal Grants*		State/Local Grants		Institutional Grants		Loans		Receiving any Financial Aid
		N	\$	N	\$	N	\$	N	\$	%
College of Charleston	Charleston, SC	564	\$4,546	1,341	\$4,964	877	\$6,289	1,103	\$7,170	79%
Eastern Illinois University	Charleston, IL	397	\$4,518	363	\$3,795	567	\$5,137	558	\$6,872	94%
Ferris State University	Big Rapids, MI	799	\$4,998	653	\$6,815	1,319	\$4,822	1,265	\$7,462	96%
James Madison University	Harrisburg, VA	631	\$4,273	361	\$5,601	860	\$7,020	1,941	\$7,970	63%
Marshall University	Huntington, WV	913	\$5,141	1,137	\$4,832	1,180	\$4,658	1,104	\$5,956	95%
Southern Illinois University - Edwardsville	Edwardsville, IL	690	\$4,766	470	\$3,397	1,317	\$4,401	1,146	\$6,189	93%
Truman State University	Kirksville, MO	286	\$4,548	711	\$2,986	1,247	\$6,032	598	\$6,036	99%
University of Massachusetts - Dartmouth	North Dartmouth, MA	565	\$4,464	778	\$2,094	991	\$5,044	1,033	\$7,277	92%
University of Minnesota - Duluth	Duluth, MN	491	\$4,701	743	\$4,995	1,466	\$3,173	1,416	\$8,846	88%
University of Northern Iowa	Cedar Falls, IA	520	\$4,349	61	\$5,221	1,227	\$2,761	1,112	\$6,050	81%
Western Washington University	Bellingham, WA	643	\$4,427	456	\$6,276	1,714	\$3,932	1,211	\$6,161	81%

Source: *Integrated Postsecondary Education Data System (IPEDS)*

Full-time, first-time, degree/certificate-seeking undergraduate students receiving financial aid

\$ = Average amount of aid received

Retention and Graduation Rates Fall 2018 and 2019

Institution	Location	Retention* %	Graduation Rates** %
College of Charleston	Charleston, SC	79	71
Eastern Illinois University	Charleston, IL	70	58
Ferris State University	Big Rapids, MI	76	58
James Madison University	Harrisburg, VA	90	84
Marshall University	Huntington, WV	72	46
Southern Illinois University - Edwardsville	Edwardsville, IL	75	47
Truman State University	Kirkville, MO	83	72
University of Massachusetts - Dartmouth	North Dartmouth, MA	71	56
University of Minnesota - Duluth	Duluth, MN	79	59
University of Northern Iowa	Cedar Falls, IA	84	65
Western Washington University	Bellingham, WA	81	68

Source: *Integrated Postsecondary Education Data System (IPEDS)*

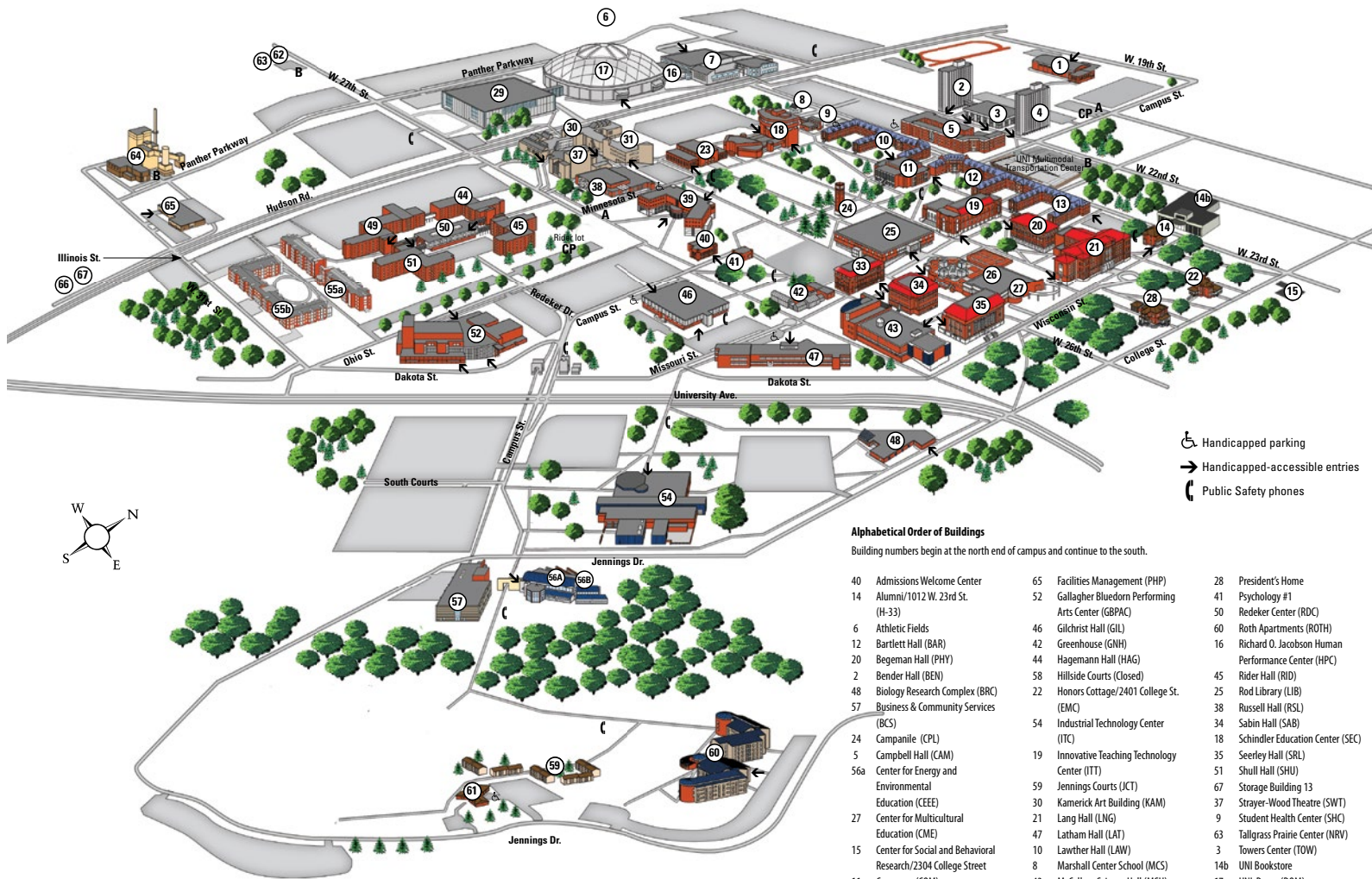
*Full-time retention rate 2018-19 academic year

**Graduation rates within 150% of normal time Fall 2018

Degrees Granted in Academic Year 2018 - 2019

Institution	Location	Baccalaureate			Total
		(Bachelor's)	Master's	Doctorates	
College of Charleston	Charleston, SC	2,145	214	0	2,359
Eastern Illinois University	Charleston, IL	1,462	614	0	2,076
Ferris State University	Big Rapids, MI	2,563	160	179	2,902
James Madison University	Harrisburg, VA	4,412	777	37	5,226
Marshall University	Huntington, WV	1,537	901	231	2,669
Southern Illinois University - Edwardsville	Edwardsville, IL	2,617	593	169	3,379
Truman State University	Kirksville, MO	1,152	197	0	1,349
University of Massachusetts - Dartmouth	North Dartmouth, MA	1,363	461	92	1,916
University of Minnesota - Duluth	Duluth, MN	1,944	209	9	2,162
University of Northern Iowa	Cedar Falls, IA	2,184	515	23	2,722
Western Washington University	Bellingham, WA	3,415	309	0	3,724

Source: *Integrated Postsecondary Education Data System (IPEDS)*



- Handicapped parking
- Handicapped-accessible entries
- Public Safety phones

Alphabetical Order of Buildings

Building numbers begin at the north end of campus and continue to the south.

40	Admissions Welcome Center	65	Facilities Management (PHP)	28	President's Home
14	Alumni/1012 W. 23rd St.	52	Gallagher Bluebird Performing Arts Center (GBPAC)	41	Psychology #1
6	Athletic Fields	46	Gilchrist Hall (GIL)	50	Redecker Center (RDC)
12	Bartlett Hall (BAR)	42	Greenhouse (GNH)	60	Roth Apartments (ROTH)
20	Begeman Hall (PHY)	44	Hagemann Hall (HAG)	16	Richard O. Jacobson Human Performance Center (HPC)
2	Bender Hall (BEN)	58	Hillside Courts (Closed)	45	Rider Hall (RID)
48	Biology Research Complex (BRC)	22	Honors Cottage/2401 College St.	25	Rod Library (LIB)
57	Business & Community Services (BCS)		(EMC)	38	Russell Hall (RSL)
24	Campbell Hall (CAM)	54	Industrial Technology Center (ITC)	34	Sabin Hall (SAB)
56a	Center for Energy and Environmental Education (CEE)	19	Innovative Teaching Technology Center (ITT)	18	Schindler Education Center (SEC)
27	Center for Multicultural Education (CME)	59	Jennings Courts (JCT)	51	Shull Hall (SHU)
15	Center for Social and Behavioral Research/2304 College Street	30	Kamerick Art Building (KAM)	67	Storage Building 13
11	Commons (COM)	21	Lang Hall (LNG)	37	Strayer-Wood Theatre (SWT)
31	Communication Arts Center (CAC)	47	Latham Hall (LAT)	9	Student Health Center (SHC)
56b	Continuing Education	10	Lawther Hall (LAW)	63	Tallgrass Prairie Center (NRV)
39	Curtis Business Building (CBB)	8	Marshall Center School (MCS)	3	Towers Center (TOW)
13	East Bartlett (SSC)	43	McCollum Science Hall (MSH)	14b	UNI Bookstore
66	Environmental Health and Safety Building	29	McLeod Center (MCL)	17	UNI-Dome (DOM)
		26	Maucker Union (MAU)	61	University Apartments Office (UAP)
		1	Nielsen Fieldhouse	62	Warehouse 1 (WH1)
		49	Noehren Hall (NRN)	7	Wellness/Recreation Center (WRC)
		55a	Panther Village 1000	23	West Gymnasium (WST)
		55b	Panther Village 3000	33	Wright Hall (WRT)
		64	Power Plant (PPL)		



University of
Northern Iowa

Institutional Research & Effectiveness

University of Northern Iowa

Cedar Falls, Iowa 50614-0005

319-273-3050

The University of Northern Iowa does not discriminate in employment or education. Visit uni.edu/policies/1303 for additional information.

